



Monteregio (J.)

Sacrobusto (J.)

DIVERSI

Monteregio (J.)

Purbachius (B.)

Albertus Magnus

Aegidius

Monte (St.)

Michaelis (N.)

III



2. 7. 10. 13. 16. 19. 22. 25. 28. 31. 34. 37. 40. 43. 46. 49. 52. 55. 58. 61. 64. 67. 70. 73. 76. 79. 82. 85. 88. 91. 94. 97. 100. 103. 106. 109. 112. 115. 118. 121. 124. 127. 130. 133. 136. 139. 142. 145. 148. 151. 154. 157. 160. 163. 166. 169. 172. 175. 178. 181. 184. 187. 190. 193. 196. 199. 202. 205. 208. 211. 214. 217. 220. 223. 226. 229. 232. 235. 238. 241. 244. 247. 250. 253. 256. 259. 262. 265. 268. 271. 274. 277. 280. 283. 286. 289. 292. 295. 298. 301. 304. 307. 310. 313. 316. 319. 322. 325. 328. 331. 334. 337. 340. 343. 346. 349. 352. 355. 358. 361. 364. 367. 370. 373. 376. 379. 382. 385. 388. 391. 394. 397. 400. 403. 406. 409. 412. 415. 418. 421. 424. 427. 430. 433. 436. 439. 442. 445. 448. 451. 454. 457. 460. 463. 466. 469. 472. 475. 478. 481. 484. 487. 490. 493. 496. 499. 502. 505. 508. 511. 514. 517. 520. 523. 526. 529. 532. 535. 538. 541. 544. 547. 550. 553. 556. 559. 562. 565. 568. 571. 574. 577. 580. 583. 586. 589. 592. 595. 598. 601. 604. 607. 610. 613. 616. 619. 622. 625. 628. 631. 634. 637. 640. 643. 646. 649. 652. 655. 658. 661. 664. 667. 670. 673. 676. 679. 682. 685. 688. 691. 694. 697. 700. 703. 706. 709. 712. 715. 718. 721. 724. 727. 730. 733. 736. 739. 742. 745. 748. 751. 754. 757. 760. 763. 766. 769. 772. 775. 778. 781. 784. 787. 790. 793. 796. 799. 802. 805. 808. 811. 814. 817. 820. 823. 826. 829. 832. 835. 838. 841. 844. 847. 850. 853. 856. 859. 862. 865. 868. 871. 874. 877. 880. 883. 886. 889. 892. 895. 898. 901. 904. 907. 910. 913. 916. 919. 922. 925. 928. 931. 934. 937. 940. 943. 946. 949. 952. 955. 958. 961. 964. 967. 970. 973. 976. 979. 982. 985. 988. 991. 994. 997. 1000.

~~92 B 7 3~~

112² 21

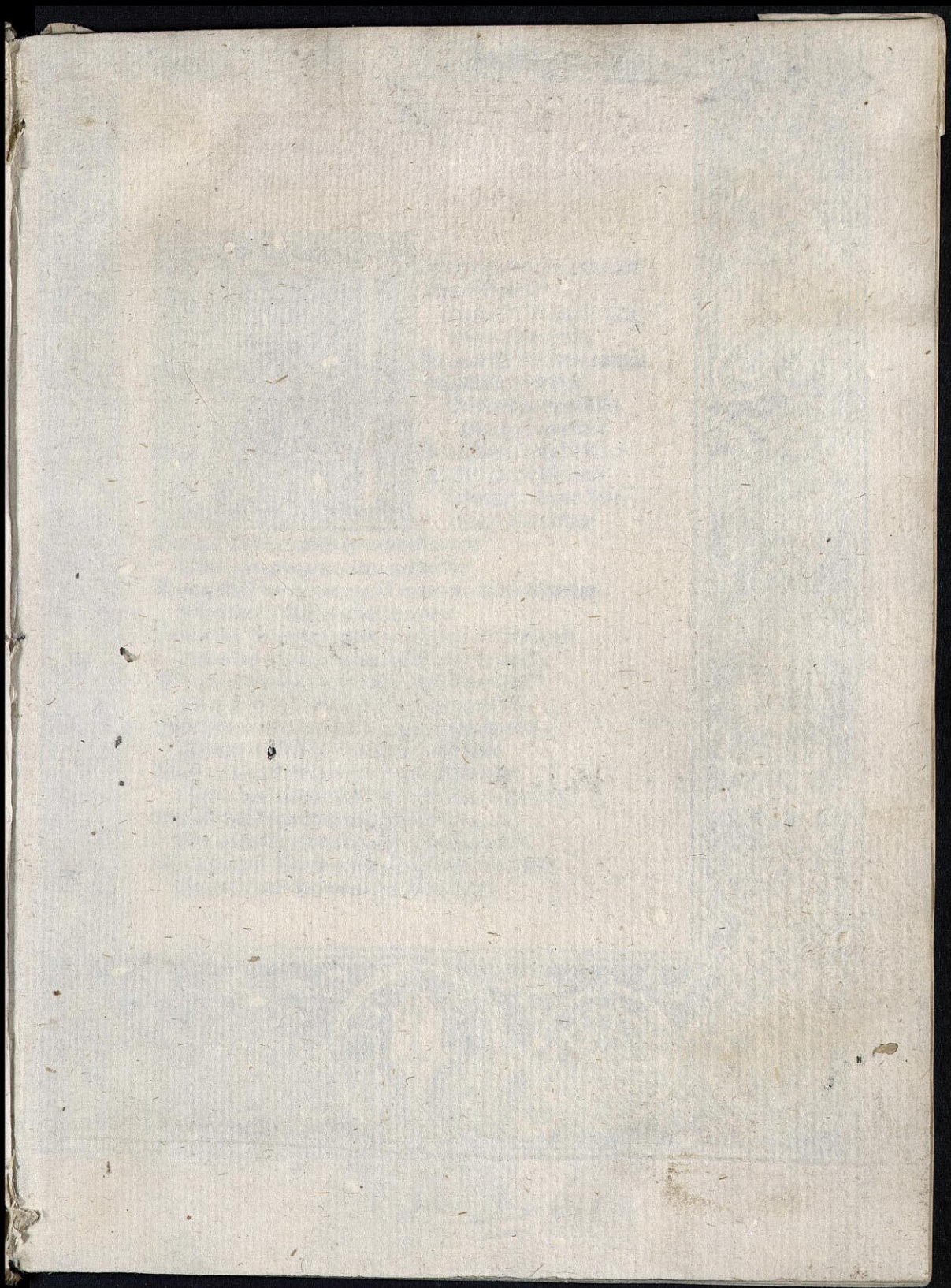
I-215

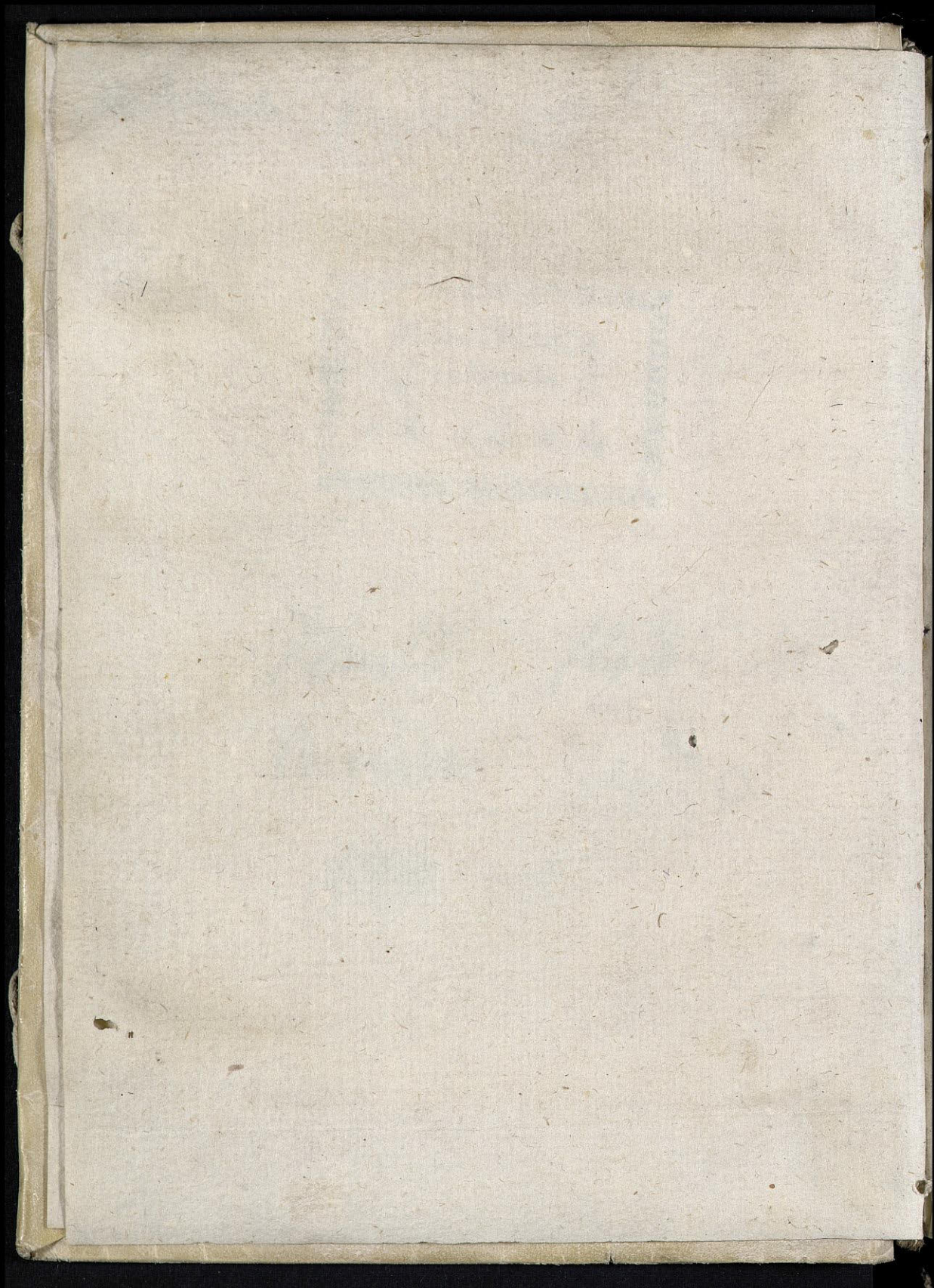
XXXXXXXXXXXXXXXXXXXXXXXXXXXX
 BIBLIOTECA
 76 COMPLUTENSE. 2
 E. 2. c. 2. N. 4.
 XXXXXXXXXXXXXXXXXXXXXXXXXXXX

Geneto 1485

Papira 1490

~~129 - 1~~





In laudem operis Calendarij a Johanne de mon-
te regio Germanorum decoris nostre etatis Astro-
nomorum principis editi Jacobi Sentini Ricinensis
Carmina.



Esperides hortum vatun
tenuisse puellas.
Omnis et hesperia gra-
iaq; turba canit.
In quo sulca simul ramis
fulgentibus arbor
Prebebat dominis
aurea poma suis.
Hortulus ille mihi liber
est hic (crede) latinis
Nam non est toto hoc
ditior orbe liber

Luius si flava cupies ex arboze lector
Una poma leges aurea mille die.
Aureus hic numerus quod tanto nomine dignum
Effecit cesar iulius auctor opus.
Tempora Romanis gentes quibus era ferebant
Que proprium nomen inditionis habent.
Interualla cyclis sunt hic et Apollinis alti
Monstratq; et domini littera certa diem.
Vinc phetonteos poteris cognoscere motus
Motus et phebes hinc tibi nosse licet.
Adde etiam phebi pariter luneq; labores
Quos qui scire volent hinc bene scire queunt
Vix tibi uel titan cum iungitur ipse sorori
Oppositusve manet conspiciendus adest.
Vix quibus in signis phebus uel luna uebatur
Edocet: ambobus dat sua lora liber.

Hic tibi horiçonte ⁊ descendant horrida signa
Ascendant ve quibus monstat in arte modis.
Dic q̄ queq; dies p̄bebo fulgente trabatur
Quãq; breuis maneat stat tibi queq; dies
Dic modo inequalis nec non equalis habetur
Hora: quod ⁊ quadrans noscere posse docet.
Dic etiam tabula est qua constant omnia cunctis
Urbibus europe hec datq; trahitq; gradus
Hoc germanus opus regio de monte Jobannes
Composuit: patrie nomen honosq; sue
Qui fuit ⁊ rethor summus qui solus ⁊ alta
Astrozum doctor verus in arte fuit.
Qui fuit ⁊ vates celebris: cui semp abunde
Et latia eloquium graiaq; lingua dedit.
Multa viris latijs iuuenis monumenta reliquit
Scribere sed nobis dum meliora parat.
Da scelus infandum secuit sua fila sorozum.
Una trium celeri vipera seua manu
Notus in Italia est ⁊ qua regione potentes
Mergit equos p̄bebus nascitur vnde simul.

L. Joannes Lucilius sanctritter Helbronnenfis
Lectori. S.

Cui dedit ingenium diuina potentia: ⁊ artes
Qui bene dedalias solus in orbe tenet.
Hoc Augustensis ratdolt Germanus Erhardus
dispositis signis vndiq; pressit opus.
Vinat ut hic: semp voluentes fata sorozes.
Nam prodest multis lector amice roga.
Anno. S. 1485. Idus Octobr| Venerijs.

Tabula regionum.

| | D m g | | | D m g | | | |
|--------------------|-------|-----|----|----------------|---|-----|----|
| Hybernia | m | 116 | 59 | Madebergum | a | 016 | 54 |
| Scotia | m | 036 | 59 | Erfordia | a | 04 | 51 |
| Oxonium | m | 052 | 53 | Lips | a | 016 | 51 |
| Compostellum | m | 140 | 45 | Ingelstadium | a | 04 | 49 |
| Lyfibona | m | 140 | 41 | Nurenberga | a | 00 | 49 |
| Toletum | m | 124 | 41 | Ratisbona | a | 06 | 49 |
| Lozdaba | m | 127 | 38 | Ulma | a | 00 | 47 |
| Cesaraugusta | m | 16 | 41 | Praga | a | 024 | 50 |
| Rotbomagus | m | 043 | 50 | Uracislaui | a | 040 | 51 |
| Parisus | m | 030 | 48 | Eraconia | a | 056 | 51 |
| Lugdunum | m | 031 | 45 | Laschouia | a | 056 | 50 |
| Burdigalia | m | 052 | 45 | Buda | a | 050 | 47 |
| Fuinio | m | 032 | 44 | Segnia | a | 032 | 45 |
| Tbolosa | m | 043 | 43 | Vienna Panonie | a | 015 | 48 |
| Vienna prouincie | m | 030 | 44 | Daraui | a | 010 | 48 |
| Massilia | m | 028 | 43 | Salceburgum | a | 012 | 48 |
| Prugis | m | 036 | 52 | Judeburgum | a | 014 | 47 |
| Bandauum | m | 024 | 52 | Villacum | a | 013 | 46 |
| Traiectum | m | 012 | 53 | Bixina | a | 08 | 45 |
| Colonia agrippina | m | 013 | 51 | Venetie | a | 010 | 45 |
| Machilinia | m | 024 | 51 | Ancon | a | 014 | 44 |
| Maguntia | m | 015 | 50 | Roma | a | 020 | 42 |
| Verbipolis | m | 04 | 50 | Larentum | a | 044 | 40 |
| Argentina | m | 012 | 47 | Brundisium | a | 040 | 39 |
| Constantia | m | 010 | 46 | Neapolis | a | 036 | 41 |
| Augusta vindelicor | a | 010 | 46 | Florentia | a | 010 | 43 |
| Dacia | a | 036 | 58 | Mediolanum | a | 00 | 44 |
| Suetia | a | 028 | 62 | Laurinum | m | 02 | 43 |
| Lubeca | a | 016 | 56 | Genua | m | 04 | 43 |
| Dantiscum | a | 056 | 56 | Sardinia | a | 02 | 38 |
| Prunfuiga | a | 00 | 53 | Sicilia | a | 030 | 37 |

1475

1494

1513

| | 1475 | | 1494 | | 1513 | |
|----|------|----------|------|----------|----------|----------|
| | Con. | Oppō. | Con. | Oppō. | Con. | Oppō. |
| 1 | 8 | 12 13 | | 7 | 11 48 | |
| 2 | | 12 8 29 | 8 | 4 30 | 12 22 5 | 4 12 11 |
| 3 | 16 | 21 52 | 16 | 5 28 | | 8 3 38 |
| 4 | | 1 18 41 | | 1 | 2 51 | 16 16 32 |
| 5 | 5 | 14 46 | 5 | 0 23 | 9 21 42 | 1 11 59 |
| 6 | | 9 9 56 | | | | 5 8 17 |
| 7 | 13 | 6 17 | 13 | 4 2 | 17 21 26 | 13 18 27 |
| 8 | 2 | 13 19 | 2 | 13 58 | | 9 5 18 |
| 9 | 10 | 20 52 | 10 | 21 25 | 6 5 53 | 17 14 31 |
| 10 | | 14 20 41 | | | 10 21 3 | 2 9 39 |
| 11 | 18 | 16 48 | 18 | 6 51 | 14 13 27 | 6 3 58 |
| 12 | | 3 13 40 | | 7 20 27 | | 14 12 51 |
| 13 | 7 | 11 1 | 7 | 1 10 | | 18 4 37 |
| 14 | 15 | 18 34 | | 11 16 36 | | 3 20 28 |
| 15 | | 19 12 56 | | | | 7 13 6 |
| 16 | 4 | 6 18 | 4 | 23 0 | | 11 6 32 |
| 17 | 12 | 15 2 | | | 15 13 29 | |
| 18 | 1 | 22 25 | 15 | 5 55 | | 19 10 50 |
| 19 | | 8 23 2 | 4 | 23 0 | 19 2 58 | 4 8 23 |
| 20 | 12 | 15 2 | | | 8 18 17 | 8 5 43 |
| 21 | 1 | 22 25 | 12 | 12 37 | 16 6 38 | |
| 22 | | 5 15 35 | | 1 | 22 3 1 | 12 2 36 |
| 23 | 9 | 9 47 | | 9 | 5 32 | 1 22 38 |
| 24 | | 13 19 7 | | | | 16 6 0 |
| 25 | | 17 10 35 | | 13 | 4 53 | 5 14 35 |
| 26 | 17 | 16 35 | | 17 | 0 54 | 13 22 1 |
| 27 | | 2 14 3 | | 2 | 21 39 | 17 15 18 |
| 28 | 6 | 11 3 | | 6 | 18 56 | 2 9 29 |
| 29 | | 0 7 21 | | | | 6 4 34 |
| 30 | 14 | 8 1 | | 14 | 2 48 | 10 16 26 |
| 31 | 3 | 15 47 | | 3 | 14 52 | 14 13 50 |
| 32 | 11 | 22 44 | | 11 | 23 41 | 18 20 18 |
| 33 | 19 | 13 17 | | 19 | 6 56 | 18 10 49 |
| 34 | | 4 9 8 | | 4 | 0 3 | 3 7 6 |
| 35 | 8 | 5 46 | | 8 | 18 2 | 11 20 57 |
| 36 | | | | | | 7 2 30 |
| 37 | | | | | | 15 15 20 |
| 38 | | | | | | 19 6 49 |
| 39 | | | | | | 4 22 16 |
| 40 | | | | | | |

KX

Januarius

Solis

Lune

Ascendēs.

| | | | ā | h | ō | ā | ō | ā | h | ō | ā |
|----|---|-------------------|----|----|----|----|----|----|---|----|----|
| 1 | A | Circūcisio dñi | 20 | 3 | 0 | 13 | 0 | 13 | 1 | 24 | 8 |
| 2 | b | 4 non | 21 | 4 | 0 | 26 | 0 | 26 | 1 | 24 | 10 |
| 3 | c | 3 non | 22 | 6 | 1 | 10 | 1 | 9 | 1 | 32 | 11 |
| 4 | d | 2 non | 23 | 7 | 1 | 23 | 1 | 22 | 1 | 36 | 13 |
| 5 | e | Non | 24 | 8 | 2 | 6 | 2 | 5 | 1 | 40 | 15 |
| 6 | f | 8 id ^o | 25 | 9 | 2 | 19 | 2 | 18 | 1 | 44 | 16 |
| 7 | g | 7 id ^o | 26 | 11 | 3 | 2 | 3 | 1 | 1 | 48 | 18 |
| 8 | A | 6 id ^o | 27 | 12 | 3 | 15 | 3 | 15 | 1 | 52 | 19 |
| 9 | b | 5 id ^o | 28 | 13 | 3 | 29 | 3 | 28 | 1 | 56 | 20 |
| 10 | c | 4 id ^o | 29 | 14 | 4 | 12 | 4 | 11 | 2 | 0 | 22 |
| 11 | d | 3 id ^o | 30 | 16 | 4 | 25 | 4 | 24 | 2 | 4 | 24 |
| 12 | e | 2 id ^o | 1 | 17 | 5 | 8 | 5 | 7 | 2 | 8 | 25 |
| 13 | f | Idus | 2 | 18 | 5 | 21 | 5 | 20 | 2 | 12 | 27 |
| 14 | g | 19 kal | 3 | 19 | 6 | 4 | 6 | 3 | 2 | 16 | 28 |
| 15 | A | 18 kal | 4 | 20 | 6 | 18 | 6 | 16 | 2 | 20 | 30 |
| 16 | b | 17 kal | 5 | 21 | 7 | 1 | 6 | 29 | 2 | 24 | 31 |
| 17 | c | 16 kal | 6 | 22 | 7 | 14 | 7 | 12 | 2 | 28 | 2 |
| 18 | d | 15 kal | 7 | 23 | 7 | 27 | 7 | 25 | 2 | 32 | 4 |
| 19 | e | 14 kal | 8 | 24 | 8 | 10 | 8 | 8 | 2 | 36 | 5 |
| 20 | f | 13 kal | 9 | 25 | 8 | 24 | 8 | 21 | 2 | 40 | 6 |
| 21 | g | 12 kal | 10 | 26 | 9 | 7 | 9 | 4 | 2 | 44 | 7 |
| 22 | A | 11 kal | 11 | 27 | 9 | 20 | 9 | 17 | 2 | 48 | 9 |
| 23 | b | 10 kal | 12 | 28 | 10 | 3 | 10 | 0 | 2 | 52 | 10 |
| 24 | c | 9 kal | 13 | 29 | 10 | 16 | 10 | 14 | 2 | 56 | 11 |
| 25 | d | 8 kal | 14 | 30 | 10 | 29 | 10 | 27 | 3 | 0 | 13 |
| 26 | e | 7 kal | 15 | 31 | 11 | 13 | 11 | 10 | 3 | 4 | 14 |
| 27 | f | 6 kal | 16 | 31 | 11 | 26 | 11 | 23 | 3 | 8 | 15 |
| 28 | g | 5 kal | 17 | 32 | 0 | 9 | 0 | 6 | 3 | 12 | 16 |
| 29 | A | 4 kal | 18 | 33 | 0 | 22 | 0 | 19 | 3 | 16 | 18 |
| 30 | b | 3 kal | 19 | 33 | 1 | 5 | 1 | 2 | 3 | 20 | 19 |
| 31 | c | 2 kal | 20 | 34 | 1 | 18 | 1 | 15 | 3 | 24 | 20 |

| 1 4 7 5 | | | | 1 4 9 4 | | | | 1 5 1 3 | | | |
|---------|----------|-------|----------|-----------|--|------------|--|----------|--|------------|--|
| Con. | | Oppó. | | Con. | | Oppó. | | Con. | | Oppó. | |
| 1 | | | 12 2 50 | | | 12 13 0 | | | | 12 6 32 | |
| 2 | 16 15 39 | | | 16 0 28 | | 12 15 55 | | 10 8 52 | | | |
| 3 | | | 1 11 16 | 5 18 58 | | | | | | 1 5 27 | |
| 4 | 5 5 56 | | 9 23 40 | | | 9 15 24 | | 5 2 46 | | | |
| 5 | 13 16 20 | | | 13 16 31 | | | | 13 10 47 | | 9 0 17 | |
| 6 | 2 23 34 | | 7 7 50 | | | 17 8 44 | | 2 23 16 | | 17 5 35 | |
| 7 | | | 6 15 49 | 2 0 25 | | 6 15 52 | | | | 6 16 6 | |
| 8 | 10 8 46 | | | 10 7 20 | | | | 10 8 15 | | 14 23 7 | |
| 9 | | | 14 13 52 | 18 21 23 | | 14 2 35 | | 18 15 24 | | | |
| 10 | 8 10 58 | | | | | 3 17 5 | | | | 3 8 23 | |
| 11 | | | 3 8 25 | 7 13 37 | | | | 7 2 15 | | 11 21 3 | |
| 12 | 7 5 54 | | | | | 11 10 44 | | | | | |
| 13 | 15 8 23 | | 11 3 3 | 15 23 36 | | | | 15 7 56 | | | |
| 14 | 4 17 45 | | 19 1 23 | | | 19 19 18 | | | | 19 5 39 | |
| 15 | | | 8 9 26 | 4 14 6 | | 8 7 58 7 | | 4 2 47 | | 8 23 17 | |
| 16 | 12 0 55 | | 10 17 28 | 12 0 54 7 | | 16 16 22 1 | | 12 19 0 | | | |
| 17 | 1 11 7 | | | 1 8 2 1 | | | | | | 16 17 12 | |
| 18 | | | 5 5 41 | 9 17 2 | | 5 0 11 | | 1 9 0 | | 5 0 27 7 | |
| 19 | 9 1 13 | | | | | 13 2 1 35 | | 9 15 52 | | 13 10 42 1 | |
| 20 | | | 13 13 45 | 17 18 37 | | | | 17 5 20 | | | |
| 21 | 17 10 58 | | | | | 2 16 2 | | 6 21 19 | | 2 0 53 | |
| 22 | | | 2 7 41 | 6 13 31 | | | | | | 10 18 21 | |
| 23 | 6 3 33 | | 10 22 33 | | | 10 10 43 | | | | | |
| 24 | 14 18 22 | | | 14 16 33 | | | | 14 7 22 | | | |
| 25 | | | 18 9 53 | | | 18 9 40 | | 3 22 9 | | 18 3 13 | |
| 26 | 3 1 19 | | 7 16 56 | 3 2 3 | | 7 17 53 | | | | 7 16 8 | |
| 27 | 11 8 59 | | 15 9 18 | 11 9 21 | | | | 11 9 14 | | | |
| 28 | 19 5 30 | | | 19 19 10 | | 15 1 39 | | 19 16 25 | | 15 0 48 | |
| | | | | | | 4 13 36 | | | | | |

KL**Februarius****Solis****Lune****Ascendēs.**

| d | | | Solis | | Lune | | Ascendēs. | | | | | | |
|----|----------|-------------------|----------------------------|-------|-------|-------|-----------|-------|----|----|----|----------|----|
| | | | h m | s s | h m | s s | h m | s s | | | | | |
| 1 | d | Brigide virginis | 21 | 34 | 2 | 2 | 1 | 28 | 3 | 28 | II | 21 | |
| 2 | e | 4 non | Purificatio marie | 22 | 35 | 2 | 15 | 2 | 11 | 3 | 32 | 22 | |
| 3 | f | 3 non | Blasij episcopi | 23 | 36 | 2 | 28 | 2 | 24 | 3 | 36 | 23 | |
| 4 | g | 2 non | | 24 | 36 | 3 | 11 | 3 | 7 | 3 | 40 | 24 | |
| 5 | A | Non | Agathe virginis | 25 | 37 | 3 | 24 | 3 | 20 | 3 | 44 | 25 | |
| 6 | b | 8 id ^o | Dorothee virginis | 26 | 37 | 4 | 8 | 4 | 3 | 3 | 48 | 26 | |
| 7 | c | 7 id ^o | | 27 | 78 | 4 | 21 | 4 | 16 | 3 | 52 | 27 | |
| 8 | d | 6 id ^o | | 28 | 36 | 5 | 4 | 5 | 0 | 3 | 56 | 28 | |
| 9 | e | 5 id ^o | Apollonie virginis | 29 | 38 | 5 | 17 | 5 | 13 | 4 | 0 | 29 | |
| 10 | f | 4 id ^o | Scolastice virginis | X | 0 | 39 | 6 | 0 | 5 | 26 | 4 | 4 | 30 |
| 11 | g | 3 id ^o | | 1 | 39 | 6 | 13 | 6 | 9 | 4 | 8 | 9 | 1 |
| 12 | A | 2 id ^o | | 2 | 39 | 6 | 27 | 6 | 22 | 4 | 12 | 2 | |
| 13 | b | Idus | | 3 | 39 | 7 | 10 | 7 | 5 | 4 | 16 | 3 | |
| 14 | c | 16 kal | Mar. Valentini mris | 4 | 39 | 7 | 23 | 7 | 18 | 4 | 20 | 4 | |
| 15 | d | 15 kal | | 5 | 40 | 8 | 6 | 8 | 1 | 4 | 24 | 5 | |
| 16 | e | 14 kal | Juliane virginis | 6 | 40 | 8 | 19 | 8 | 14 | 4 | 28 | 6 | |
| 17 | f | 13 kal | | 7 | 40 | 9 | 2 | 8 | 27 | 4 | 32 | 7 | |
| 18 | g | 12 kal | | 8 | 40 | 9 | 16 | 9 | 10 | 4 | 36 | 8 | |
| 19 | A | 11 kal | | 9 | 40 | 9 | 29 | 9 | 23 | 4 | 40 | 9 | |
| 20 | b | 10 kal | | 10 | 40 | 10 | 12 | 10 | 6 | 4 | 44 | 10 | |
| 21 | c | 9 kal | | 11 | 40 | 10 | 25 | 10 | 19 | 4 | 48 | 11 | |
| 22 | d | 8 kal | Carbedra Petri | 12 | 40 | 11 | 8 | 11 | 2 | 4 | 52 | 12 | |
| 23 | e | 7 kal | Vigilia | 13 | 40 | 11 | 22 | 11 | 16 | 4 | 56 | 13 | |
| 24 | f | 6 kal | Matthie apostoli | 14 | 39 | 0 | 5 | 11 | 29 | 5 | 0 | 14 | |
| 25 | g | 5 kal | | 15 | 39 | 0 | 18 | 0 | 12 | 5 | 4 | 14 | |
| 26 | A | 4 kal | | 16 | 39 | 1 | 1 | 0 | 25 | 5 | 8 | 15 | |
| 27 | b | 3 kal | | 17 | 38 | 1 | 14 | 1 | 8 | 5 | 12 | 16 | |
| 28 | c | 2 kal | | 18 | 38 | 1 | 27 | 1 | 21 | 5 | 16 | 17 | |
| | | | | 19 | 37 | | | | | | | | |

1475

1494

1513

| | 1475 | | 1494 | | 1513 | |
|----|----------|----------|----------|----------|----------|----------|
| | Lon. | Oppō. | Lon. | Oppō. | Lon. | Oppō. |
| 1 | 8 23 46 | 4 2 25 | 8 8 58 | | | 4 8 30 |
| 2 | | 12 21 15 | | 12 5 12 | 8 1 11 | 12 18 44 |
| 3 | | | 16 18 31 | | 10 2 7 | 1 13 9 |
| 4 | 10 6 48 | | | 1 15 19 | 5 20 58 | |
| 5 | 5 18 17 | 1 1 1 | 5 11 18 | | | 9 18 14 |
| 6 | | 9 10 48 | | 9 6 25 | | |
| 7 | 13 1 45 | 17 17 41 | 13 2 41 | 17 18 15 | 13 0 33 | 17 17 50 |
| 8 | 2 10 13 | | 2 9 40 | | 2 10 17 | |
| 9 | 10 21 46 | 6 3 31 | 10 17 9 | 6 1 13 | 10 17 41 | 6 2 10 |
| 10 | | 14 7 24 | | 14 16 58 | | 14 9 42 |
| 11 | 18 4 54 | | 18 13 2 | | 18 3 7 | 3 21 21 |
| 12 | 7 23 7 | 3 2 12 | | 3 9 39 | 7 22 22 | |
| 13 | | 11 19 16 | 7 7 7 | | | 11 12 40 |
| 14 | 15 19 27 | | 15 14 33 | 11 4 36 | | |
| 15 | | 19 11 26 | | 19 8 53 | 15 1 55 | 19 22 46 |
| 16 | 2 3 2 | 8 18 26 | 4 2 18 | 8 18 55 | 4 18 54 | |
| 17 | 15 9 56 | | 12 10 54 | | 12 8 26 | 8 14 9 |
| 18 | | 16 5 54 | 1 18 13 | 16 1 47 | 1 17 51 | 16 2 27 |
| 19 | 1 0 53 | 5 20 45 | | 5 11 25 | | 5 9 22 |
| 20 | 1 17 27 | | 9 5 28 | | 9 1 15 | |
| 21 | | | | 13 14 38 | 17 20 25 | 13 0 29 |
| 22 | | 13 6 42 | 17 12 6 | | | 2 17 5 |
| 23 | 12 3 6 | 2 22 35 | | 2 9 26 | 6 14 18 | |
| 24 | 6 17 5 | 10 10 41 | 7 | 6 6 25 | | 10 11 46 |
| 25 | 14 3 8 | 18 18 37 | | 10 2 42 | 14 22 8 | |
| 26 | 1 10 22 | | 14 3 27 | 18 19 33 | | 18 16 37 |
| 27 | 11 19 37 | 7 2 38 | 3 11 9 | 7 19 25 | 3 10 10 | |
| 28 | | | 11 18 2 | 15 13 32 | 11 18 57 | 7 2 54 |
| 29 | 19 22 6 | 15 1 0 | 19 8 20 | | | 15 9 49 |
| 30 | | 4 19 29 | | 4 4 5 | 19 2 6 | 4 19 7 |
| 31 | 8 15 54 | | 8 0 36 | 12 21 45 | 8 13 1 | |

KP**Martius****Solis****Lune****Ascendēs.**

| | | | ā | ā | ā | ā | ā | ā | | | | | |
|----|----------|-------------------|--------------------------|----------|----------|----------|----------|----------|----|----|----|-----------|----|
| 1 | d | | X | 20 | 37 | 2 | 11 | 2 | 4 | 5 | 20 | 18 | |
| 2 | e | 6 non | Simplicis pape | 21 | 36 | 2 | 24 | 2 | 17 | 5 | 24 | 19 | |
| 3 | f | 5 non | | 22 | 36 | 3 | 7 | 3 | 0 | 5 | 28 | 20 | |
| 4 | g | 4 non | Adriani martyris | 23 | 35 | 3 | 20 | 3 | 13 | 5 | 32 | 20 | |
| 5 | H | 3 non | | 24 | 35 | 4 | 3 | 3 | 26 | 5 | 36 | 21 | |
| 6 | b | 2 non | Victoris martyris | 25 | 34 | 4 | 16 | 4 | 9 | 5 | 40 | 22 | |
| 7 | c | Non | Perpetue z Felicitatis | 26 | 33 | 5 | 0 | 4 | 22 | 5 | 44 | 23 | |
| 8 | d | 8 id ^o | | 27 | 32 | 5 | 13 | 5 | 5 | 5 | 48 | 24 | |
| 9 | e | 7 id ^o | | 28 | 31 | 5 | 26 | 5 | 18 | 5 | 52 | 25 | |
| 10 | f | 6 id ^o | | 29 | 30 | 6 | 9 | 6 | 1 | 5 | 55 | 26 | |
| 11 | g | 5 id ^o | Clavis pasce | Y | 0 | 29 | 6 | 22 | 6 | 15 | 6 | 0 | 26 |
| 12 | H | 4 id ^o | Gregorij pape | 1 | 28 | 7 | 6 | 6 | 28 | 6 | 4 | 27 | |
| 13 | b | 3 id ^o | | 2 | 27 | 7 | 19 | 7 | 11 | 6 | 8 | 28 | |
| 14 | c | 2 id ^o | | 3 | 26 | 8 | 2 | 7 | 24 | 6 | 12 | 29 | |
| 15 | d | Idus | | 4 | 25 | 8 | 15 | 8 | 7 | 6 | 16 | 29 | |
| 16 | e | 17 kal | Aprilis | 5 | 24 | 8 | 28 | 8 | 20 | 6 | 20 | 30 | |
| 17 | f | 16 kal | Gertrudis virginis | 6 | 23 | 9 | 11 | 9 | 3 | 6 | 24 | 31 | |
| 18 | g | 15 kal | | 7 | 22 | 9 | 25 | 9 | 16 | 6 | 28 | 2 | |
| 19 | H | 14 kal | | 8 | 21 | 10 | 8 | 9 | 29 | 6 | 32 | 3 | |
| 20 | b | 13 kal | | 9 | 20 | 10 | 21 | 10 | 12 | 6 | 36 | 3 | |
| 21 | c | 12 kal | Benedicti abbatis | 10 | 18 | 11 | 4 | 10 | 25 | 6 | 40 | 4 | |
| 22 | d | 11 kal | | 11 | 17 | 11 | 17 | 11 | 8 | 6 | 44 | 5 | |
| 23 | e | 10 kal | | 12 | 16 | 0 | 0 | 11 | 21 | 6 | 48 | 6 | |
| 24 | f | 9 kal | | 13 | 15 | 0 | 14 | 0 | 4 | 6 | 52 | 6 | |
| 25 | g | 8 kal | Annunciatio marie | 14 | 13 | 0 | 27 | 0 | 17 | 6 | 56 | 7 | |
| 26 | H | 7 kal | | 15 | 12 | 1 | 10 | 1 | 1 | 7 | 0 | 8 | |
| 27 | b | 6 kal | | 16 | 10 | 1 | 23 | 1 | 14 | 7 | 4 | 9 | |
| 28 | c | 5 kal | | 17 | 9 | 2 | 6 | 1 | 27 | 7 | 8 | 9 | |
| 29 | d | 4 kal | | 18 | 8 | 2 | 20 | 2 | 10 | 7 | 13 | 10 | |
| 30 | e | 3 kal | | 19 | 7 | 3 | 3 | 2 | 23 | 7 | 16 | 11 | |
| 31 | f | 2 kal | | 20 | 6 | 3 | 16 | 3 | 6 | 7 | 20 | 12 | |

| 1475 | | | 1494 | | | 1513 | | |
|------|----------|----------|----------|----------|--|----------|------------|--|
| Con. | Oppō. | | Con. | Oppō. | | Con. | Oppō. | |
| 1 | | 12 13 58 | | | | 16 19 8 | 12 7 54 | |
| 2 | 16 18 55 | | 16 10 23 | | | | 11 16 32 | |
| 3 | | 1 11 50 | | 1 6 0 | | 5 13 35 | | |
| 4 | 5 4 4 | 9 19 45 | 5 0 41 | 9 18 25 | | | 9 9 58 | |
| 5 | 13 11 1 | | 13 11 12 | | | 13 11 16 | | |
| 6 | 2 21 33 | 17 3 51 | 2 18 19 | 17 2 35 | | 2 19 10 | 17 3 28 | |
| 7 | | 6 16 8 | | 6 10 28 | | | 6 10 35 | |
| 8 | 10 11 41 | | 10 3 20 | | | 10 2 3 | 14 1 1 | |
| 9 | 18 21 24 | 4 0 14 | | 14 8 2 | | 18 15 40 | | |
| 10 | | 3 17 58 | 18 5 4 | | | | 3 11 16 | |
| 11 | 7 13 46 | | 7 23 52 | 3 2 27 | | 7 7 40 | | |
| 12 | | 11 8 38 | | 11 20 59 | | | 11 4 41 | |
| 13 | 15 4 15 | 19 19 43 | 15 2 33 | 19 19 34 | | 15 17 31 | | |
| 14 | 4 11 6 | | 4 11 53 | | | | 19 13 16 | |
| 15 | 12 18 45 | 8 2 42 | 2 19 6 | 8 3 38 | | 4 8 7 | 8 1 59 7 | |
| 16 | | 16 19 15 | | 16 11 25 | | 12 19 0 | 16 10 29 1 | |
| 17 | 1 15 26 | | 1 4 57 | 5 23 22 | | 1 2 8 | 5 18 8 | |
| 18 | | 5 12 40 | 9 18 46 | | | 9 11 51 | | |
| 19 | 9 9 37 | | | | | | 13 14 59 | |
| 20 | | 3 21 20 | | 13 7 3 | | 17 11 53 | | |
| 21 | 17 16 25 | | 17 4 13 | | | | 2 9 13 | |
| 22 | 6 3 44 7 | 2 10 31 | 6 20 51 | 2 0 56 | | 6 6 38 | | |
| 23 | 14 11 5 | 6 20 11 | | 10 15 53 | | | 10 3 49 | |
| 24 | 3 19 30 | 8 3 0 | 14 12 1 | | | 14 9 57 | | |
| 25 | | 7 12 49 | 3 18 53 | 18 3 31 | | 3 10 32 | 18 3 7 | |
| 26 | 11 7 1 | | 1 2 21 7 | 7 10 26 | | | 7 11 22 | |
| 27 | | 5 16 43 | 19 22 15 | 5 2 13 | | 11 2 51 | 15 18 54 | |
| 28 | 19 14 7 | | | 4 19 3 | | 19 12 12 | | |
| 29 | | 4 11 24 | 8 16 17 | | | | 4 6 32 | |
| 30 | 8 8 2 | | | 12 13 42 | | 8 2 43 | 12 21 48 | |

KP

Aprilis

Solis

Lune

Ascendēs.

| | | | ā | ā | ā | ā | ā | ā | ā | | | | |
|----|---|-------------------|--------------------------|----|----|----|----|----|----|---|----|----|----|
| 1 | g | | Y | 21 | 4 | 3 | 29 | 3 | 19 | 7 | 24 | 9 | 13 |
| 2 | H | 4 noni | | 22 | 3 | 4 | 12 | 4 | 2 | 7 | 28 | | 13 |
| 3 | b | 3 noni | | 23 | 1 | 4 | 25 | 4 | 15 | 7 | 32 | | 14 |
| 4 | c | 2 noni | Ambrosij archiepi | 23 | 59 | 5 | 9 | 4 | 28 | 7 | 35 | | 14 |
| 5 | d | Noni | | 24 | 58 | 5 | 22 | 5 | 11 | 7 | 39 | | 15 |
| 6 | e | 8 id ^o | | 25 | 56 | 6 | 5 | 5 | 24 | 7 | 43 | | 16 |
| 7 | f | 7 id ^o | | 26 | 54 | 6 | 18 | 6 | 7 | 7 | 46 | | 16 |
| 8 | g | 6 id ^o | Marie egyptiace | 27 | 52 | 7 | 1 | 6 | 20 | 7 | 49 | | 17 |
| 9 | H | 5 id ^o | | 28 | 50 | 7 | 14 | 7 | 3 | 7 | 53 | | 18 |
| 10 | b | 4 id ^o | | 29 | 48 | 7 | 28 | 7 | 16 | 7 | 57 | | 18 |
| 11 | c | 3 id ^o | | 8 | 47 | 8 | 11 | 8 | 0 | 8 | 0 | | 19 |
| 12 | d | 2 id ^o | | 1 | 45 | 8 | 24 | 8 | 13 | 8 | 4 | | 20 |
| 13 | e | Idus | | 2 | 43 | 9 | 7 | 8 | 26 | 8 | 8 | | 21 |
| 14 | f | 18 kal | Maij Lyburtij r Valeriai | 3 | 41 | 9 | 20 | 9 | 9 | 8 | 12 | | 22 |
| 15 | g | 17 kal | Clavis rogationu | 4 | 38 | 10 | 4 | 9 | 22 | 8 | 16 | | 22 |
| 16 | H | 16 kal | | 5 | 36 | 10 | 17 | 10 | 5 | 8 | 20 | | 23 |
| 17 | b | 15 kal | | 6 | 34 | 11 | 0 | 10 | 18 | 8 | 24 | | 24 |
| 18 | c | 14 kal | | 7 | 32 | 11 | 13 | 11 | 1 | 8 | 28 | | 25 |
| 19 | d | 13 kal | | 8 | 30 | 11 | 26 | 11 | 14 | 8 | 32 | | 26 |
| 20 | e | 12 kal | | 9 | 28 | 0 | 9 | 11 | 27 | 8 | 36 | | 26 |
| 21 | f | 11 kal | | 10 | 25 | 0 | 23 | 0 | 10 | 8 | 40 | | 27 |
| 22 | g | 10 kal | | 11 | 23 | 1 | 6 | 0 | 23 | 8 | 44 | | 28 |
| 23 | H | 9 kal | Georgij martyris | 12 | 21 | 1 | 19 | 1 | 6 | 8 | 48 | | 28 |
| 24 | b | 8 kal | | 13 | 18 | 2 | 2 | 1 | 19 | 8 | 52 | | 29 |
| 25 | c | 7 kal | Marci euangeliste | 14 | 16 | 2 | 15 | 2 | 2 | 8 | 56 | | 29 |
| 26 | d | 6 kal | | 15 | 14 | 2 | 28 | 2 | 16 | 9 | 0 | | 30 |
| 27 | e | 5 kal | | 16 | 11 | 3 | 12 | 2 | 29 | 9 | 4 | | 30 |
| 28 | f | 4 kal | Uitalis martyris | 17 | 8 | 3 | 25 | 3 | 12 | 9 | 8 | np | 8 |
| 29 | g | 3 kal | Clavis pentecostes | 18 | 6 | 4 | 8 | 3 | 25 | 9 | 12 | | 2 |
| 30 | H | 2 kal | | 19 | 4 | 4 | 21 | 4 | 8 | 9 | 16 | | 2 |

| 1475 | | | 1494 | | | 1513 | | |
|------|----------|----------|----------|----------|---------|-----------|-----------|--------|
| Lon. | Oppö. | | Lon. | Oppö. | | Lon. | Oppö. | |
| 1 | | 12 4 18 | | 16 23 35 | | | 16 20 56 | |
| 2 | 16 4 23 | 1 20 20 | | | 1 17 49 | | | 1 7 44 |
| 3 | 5 11 53 | | 5 10 12 | | | 5 3 48 | 9 23 1 | |
| 4 | 13 20 42 | 9 3 13 | 13 18 44 | 9 3 54 | | 13 19 41 | | |
| 5 | | 17 14 42 | | 17 10 32 | | | 17 11 12 | |
| 6 | 2 9 40 | | 2 2 57 | 6 20 6 | | 2 2 35 | 6 18 4 | |
| 7 | | 6 5 32 | 10 14 8 | | | 10 9 54 | | |
| 8 | 10 2 9 | 14 15 23 | | 14 23 18 | | | 14 9 8 | |
| 9 | 18 11 41 | | 18 20 42 | | | 18 5 2 | | |
| 10 | | 3 7 5 | | 3 18 0 | | 7 22 51 | 3 1 40 | |
| 11 | 7 1 34 | 11 19 6 | 7 14 55 | | | | 11 20 15 | |
| 12 | 15 11 33 | | 15 11 50 | 11 11 9 | | | | |
| 13 | 4 18 42 | 19 2 59 | 4 19 29 | 19 3 53 | | 15 6 33 | | |
| 14 | | 8 10 57 | | 8 10 52 | | 4 18 30 | 19 0 58 | |
| 15 | 12 3 55 | | 12 2 18 | 16 21 44 | | 12 3 14 7 | 8 11 11 1 | |
| 16 | | 16 9 13 | 1 16 32 | | | 1 10 20 | 16 18 2 | |
| 17 | 1 6 17 | | | 5 12 15 | | 9 21 11 | 5 3 20 | |
| 18 | | 5 3 40 | 9 8 44 | | | | | |
| 19 | 9 0 59 | | | 13 22 0 | | | 13 5 48 | |
| 20 | | 13 9 13 | 17 19 23 | | | 17 3 2 | | |
| 21 | 17 2 57 | 2 19 51 | | 2 13 59 | | 6 21 30 | 2 0 3 1 | |
| 22 | 6 12 2 | 10 3 43 | 6 8 41 | | | | 10 17 53 | |
| 23 | 14 18 57 | 18 11 44 | 14 19 8 | 10 2 21 | | 14 19 11 | | |
| 24 | 3 5 22 | 7 23 55 | | 18 10 31 | | | 18 11 22 | |
| 25 | 11 19 24 | | 3 2 10 | 7 18 16 | | 3 3 1 | 7 18 27 | |
| 26 | | | 11 11 5 | 15 15 44 | | 11 9 49 | | |
| 27 | | 15 7 53 | 19 12 42 | | | 19 23 20 | 15 4 46 | |
| 28 | 19 4 59 | | | 4 9 53 | | | 4 18 52 | |
| 29 | 8 21 19 | 4 1 34 | 8 7 42 | | | 8 15 14 | | |
| 30 | | 12 16 11 | | 12 4 30 | | 10 | 12 12 13 | |
| 31 | 16 11 54 | | 16 10 6 | | | 16 1 2 | 1 20 45 | |

K

Mains

Solis

Lune

Ascendēs.

| | | | g ^m | ō | g | ō | g | D ^m | g | | |
|----|---|---------------------------------------|----------------|----|----|----|----|----------------|----|----|----|
| 1 | b | Philippi et iacobi ap ^{to} z | 20 | 1 | 5 | 4 | 4 | 21 | 9 | 19 | 3 |
| 2 | c | 6 noñ | 20 | 59 | 5 | 18 | 5 | 4 | 0 | 23 | 4 |
| 3 | d | Inuentio sce crucis | 21 | 56 | 6 | 1 | 5 | 17 | 9 | 27 | 4 |
| 4 | e | 4 noñ | 22 | 54 | 6 | 14 | 6 | 0 | 9 | 30 | 5 |
| 5 | f | 3 noñ | 23 | 51 | 6 | 27 | 6 | 13 | 9 | 33 | 5 |
| 6 | g | Joānis an portā latinā | 24 | 48 | 7 | 10 | 6 | 26 | 9 | 37 | 6 |
| 7 | a | Noñ | 25 | 46 | 7 | 23 | 7 | 9 | 9 | 40 | 7 |
| 8 | b | Appitio sci michaelis | 26 | 43 | 8 | 7 | 7 | 22 | 9 | 44 | 7 |
| 9 | c | 7 id ^o | 27 | 41 | 8 | 20 | 8 | 5 | 9 | 48 | 8 |
| 10 | d | Epimachi et socioz ei ^o | 28 | 38 | 9 | 3 | 8 | 19 | 9 | 52 | 9 |
| 11 | e | 5 id ^o | 29 | 35 | 9 | 16 | 9 | 2 | 9 | 56 | 10 |
| 12 | f | Pancratij martyris II | 0 | 32 | 9 | 29 | 9 | 15 | 10 | 0 | 10 |
| 13 | g | Seruatijs epi | 1 | 30 | 10 | 12 | 9 | 28 | 10 | 4 | 11 |
| 14 | a | 2 id ^o | 2 | 27 | 10 | 26 | 10 | 11 | 10 | 8 | 11 |
| 15 | b | Janae Sophie virginis | 3 | 24 | 11 | 9 | 10 | 24 | 10 | 12 | 12 |
| 16 | c | Junij | 4 | 21 | 11 | 22 | 11 | 7 | 10 | 15 | 13 |
| 17 | d | 16 kal | 5 | 19 | 0 | 5 | 11 | 20 | 10 | 19 | 13 |
| 18 | e | 15 kal | 6 | 16 | 0 | 18 | 0 | 3 | 10 | 23 | 14 |
| 19 | f | Potentiane virginis | 7 | 13 | 1 | 2 | 0 | 16 | 10 | 26 | 15 |
| 20 | g | 13 kal | 8 | 10 | 1 | 15 | 0 | 29 | 10 | 30 | 15 |
| 21 | a | 12 kal | 9 | 7 | 1 | 28 | 1 | 12 | 10 | 34 | 16 |
| 22 | b | Helene regine | 10 | 4 | 2 | 11 | 1 | 25 | 10 | 38 | 17 |
| 23 | c | 10 kal | 11 | 1 | 2 | 24 | 2 | 8 | 10 | 42 | 18 |
| 24 | d | 9 kal | 11 | 58 | 3 | 7 | 2 | 21 | 10 | 46 | 18 |
| 25 | e | 8 kal | 12 | 55 | 3 | 21 | 3 | 4 | 10 | 50 | 19 |
| 26 | f | 7 kal | 13 | 53 | 4 | 4 | 3 | 17 | 10 | 53 | 19 |
| 27 | g | 6 kal | 14 | 50 | 4 | 17 | 4 | 1 | 10 | 57 | 20 |
| 28 | a | 5 kal | 15 | 47 | 5 | 0 | 4 | 14 | 11 | 1 | 20 |
| 29 | b | 4 kal | 16 | 44 | 5 | 13 | 4 | 27 | 11 | 5 | 21 |
| 30 | c | 3 kal | 17 | 41 | 5 | 26 | 5 | 10 | 11 | 8 | 22 |
| 31 | d | 2 kal | 18 | 38 | 6 | 10 | 5 | 23 | 11 | 12 | 22 |

1475

1494

1513

| 1475 | | 1494 | | 1513 | | | | | | | |
|------|----------|------|-------|------|-------|----|-------|----|-------|----|-------|
| Lon. | Oppö. | Lon. | Oppö. | Lon. | Oppö. | | | | | | |
| 1 | 5 18 42 | 1 | 3 21 | 5 | 19 26 | 1 | 3 9 | 5 | 15 35 | | |
| 2 | | 4 | 10 6 | | | 19 | 11 11 | | | 9 | 9 30 |
| 3 | 13 7 19 | | | 13 | 2 15 | 17 | 18 54 | 14 | 2 39 | 17 | 17 59 |
| 4 | 2 22 45 | 17 | 2 37 | 7 | 12 23 | | | 2 | 9 36 | | |
| 5 | | 6 | 19 36 | | | 6 | 6 44 | 10 | 18 16 | 6 | 1 35 |
| 6 | 10 16 51 | | | 10 | 2 5 | | | | | 14 | 22 13 |
| 7 | 18 23 42 | 14 | 4 44 | | | 14 | 14 16 | 18 | 19 6 | | |
| 8 | | 3 | 17 48 | 18 | 11 26 | | | | | 3 | 16 22 |
| 9 | 7 11 3 | | | 7 | 4 7 | 3 | 8 7 | 7 | 13 47 | | |
| 10 | 15 18 23 | 11 | 3 29 | 15 | 19 20 | 11 | 23 5 | | | 11 | 10 57 |
| 11 | | 15 | 10 17 | | | 19 | 10 50 | 15 | 17 9 | | |
| 12 | 4 2 44 | 8 | 20 2 | 4 | 2 10 | 8 | 17 22 | | | 19 | 10 21 |
| 13 | 12 14 11 | | | 12 | 9 35 | | | 4 | 2 48 | 8 | 18 37 |
| 14 | | 10 | 23 42 | | | 16 | 9 18 | 12 | 10 7 | 16 | 2 6 |
| 15 | 1 21 8 | | | 1 | 5 18 | | | 1 | 19 24 | 5 | 3 36 |
| 16 | | 5 | 18 22 | 9 | 23 12 | 5 | 2 2 | 9 | 8 45 | | |
| 17 | 9 15 11 | | | | | | | | | 13 | 20 38 |
| 18 | | 13 | 18 53 | | | 13 | 11 18 | 17 | 17 52 | | |
| 19 | 17 11 30 | | | 17 | 6 33 | | | | | 2 | 14 40 |
| 20 | 6 19 1 | 2 | 3 28 | 6 | 18 14 | 2 | 0 51 | 6 | 10 45 | | |
| 21 | 14 3 43 | 10 | 10 23 | | | 10 | 10 50 | | | 10 | 5 59 |
| 22 | 3 16 33 | 18 | 21 40 | 14 | 1 49 | 18 | 17 36 | 14 | 2 46 | 18 | 18 18 |
| 23 | | 7 | 12 22 | 3 | 9 57 | | | 3 | 9 36 | | |
| 24 | 11 8 56 | | | 11 | 21 3 | 7 | 3 4 | 11 | 17 3 | 7 | 1 7 |
| 25 | | 15 | 22 12 | | | 15 | 6 6 | | | 15 | 16 0 |
| 26 | 19 18 30 | | | 19 | 3 28 | | | 19 | 11 49 | | |
| 27 | | 4 | 13 58 | 8 | 21 42 | 4 | 0 51 | | | 4 | 8 27 |
| 28 | 8 8 27 | | | | | 12 | 17 58 | 8 | 5 36 | | |
| 29 | 16 18 34 | 12 | 2 4 | 16 | 18 47 | | | 16 | 13 23 | 12 | 3 0 |
| 30 | | 1 | 9 59 | | | 1 | 10 51 | | | 1 | 7 51 |

KP**Junius****Solis****Lune****Ascendēs.**

| | | | II | III | III | III | III | III | III | | | |
|----|----------|---|------------|------------|------------|------------|------------|------------|------------|----|-----------|----|
| 1 | a | Thicomedis martyris | 19 | 35 | 6 | 23 | 6 | 6 | 11 | 16 | II | 23 |
| 2 | f | 4 noni
Marcellini & Petri | 20 | 32 | 7 | 6 | 6 | 19 | 11 | 20 | | 24 |
| 3 | g | 3 noni
Erasmi episcopi | 21 | 29 | 7 | 19 | 7 | 2 | 11 | 24 | | 24 |
| 4 | h | 2 noni | 22 | 26 | 8 | 2 | 7 | 15 | 11 | 28 | | 25 |
| 5 | b | Noni
Bonifacij pape | 23 | 23 | 8 | 16 | 7 | 28 | 11 | 33 | | 25 |
| 6 | c | 8 id ^o | 24 | 20 | 8 | 29 | 8 | 11 | 11 | 38 | | 26 |
| 7 | d | 7 id ^o | 25 | 17 | 9 | 12 | 8 | 24 | 11 | 41 | | 27 |
| 8 | e | 6 id ^o | 26 | 14 | 9 | 25 | 9 | 7 | 11 | 46 | | 27 |
| 9 | f | 5 id ^o
Primi & Feliciani | 27 | 11 | 10 | 8 | 9 | 20 | 11 | 50 | | 28 |
| 10 | g | 4 id ^o | 28 | 8 | 10 | 21 | 10 | 3 | 11 | 54 | | 29 |
| 11 | h | 3 id ^o
Barnabe apostoli | 29 | 5 | 11 | 5 | 10 | 17 | 11 | 57 | | 29 |
| 12 | b | 2 id ^o | III | 0 | 2 | 11 | 18 | 11 | 0 | 12 | 0 | 30 |
| 13 | c | Idus | | 0 | 59 | 0 | 1 | 11 | 13 | 12 | 4 | 30 |
| 14 | d | 18 kal
Julij | | 1 | 56 | 0 | 14 | 1 | 26 | 12 | 7 | 1 |
| 15 | e | 17 kal
Viti martyris | | 2 | 53 | 0 | 27 | 0 | 9 | 12 | 10 | 1 |
| 16 | f | 16 kal | | 3 | 50 | 1 | 10 | 0 | 22 | 12 | 14 | 2 |
| 17 | g | 15 kal | | 4 | 47 | 1 | 24 | 1 | 5 | 12 | 17 | 3 |
| 18 | h | 14 kal
Marci & Marcelliani | | 5 | 44 | 2 | 7 | 1 | 18 | 12 | 20 | 2 |
| 19 | b | 13 kal
Seruasij & Protasij | | 6 | 41 | 2 | 20 | 2 | 1 | 12 | 24 | 4 |
| 20 | c | 12 kal | | 7 | 38 | 3 | 3 | 2 | 14 | 12 | 28 | 5 |
| 21 | d | 11 kal
Albani martyris | | 8 | 35 | 3 | 16 | 2 | 27 | 12 | 32 | 6 |
| 22 | e | 10 kal
Achacij & fociozei ^o | | 9 | 32 | 4 | 0 | 3 | 10 | 12 | 36 | 6 |
| 23 | f | 9 kal
Vigilia | | 10 | 29 | 4 | 13 | 3 | 23 | 12 | 40 | 7 |
| 24 | g | 8 kal
Johannis baptiste | | 11 | 26 | 4 | 26 | 4 | 6 | 12 | 44 | 8 |
| 25 | h | 7 kal | | 12 | 23 | 5 | 9 | 4 | 19 | 12 | 47 | 8 |
| 26 | b | 6 kal
Johannis & Pauli | | 13 | 21 | 5 | 22 | 5 | 3 | 12 | 51 | 9 |
| 27 | c | 5 kal
Septem dormientiu | | 14 | 18 | 6 | 5 | 5 | 16 | 12 | 55 | 10 |
| 28 | d | 4 kal
Leonis pape Vigilia | | 15 | 15 | 6 | 19 | 9 | 29 | 12 | 59 | 10 |
| 29 | e | 3 kal
Petri & Pauli ap ^o z | | 16 | 12 | 7 | 2 | 6 | 12 | 13 | 3 | 11 |
| 30 | f | 2 kal
Comemoratio sci Pauli | | 17 | 9 | 7 | 15 | 6 | 25 | 13 | | 11 |

| 1475 | | 1494 | | 1513 | | |
|------|----------|----------|----------|-----------|----------|------------|
| Lon. | Oppö. | Lon. | Oppö. | Lon. | Oppö. | |
| 1 | 5 142 | 9 17 54 | 5 2 30 | 9 17 52 | 5 1 26 | 9 18 9 |
| 2 | 13 19 31 | | 13 10 50 | | 13 9 18 | |
| 3 | | 17 15 56 | 2 23 20 | 17 4 41 | 2 17 15 | 17 1 0 |
| 4 | 2 12 58 | | | 6 18 58 | | 6 10 12 |
| 5 | | 6 10 29 | 10 15 27 | | 10 4 0 | |
| 6 | 10 7 41 | 14 16 7 | | | | 14 12 29 |
| 7 | 18 9 52 | | | 14 4 43 | 18 9 52 | |
| 8 | 7 18 52 | 3 2 46 | 18 1 9 | 3 20 46 | | 3 7 12 |
| 9 | | 11 10 41 | 7 15 28 | 11 9 13 7 | 7 4 13 | |
| 10 | 15 1 53 | 19 18 38 | 15 2 6 | 19 17 31 | | 11 0 37 |
| 11 | 4 12 13 | | 4 9 7 | | 15 2 7 | 19 18 19 |
| 12 | | 8 6 42 | 12 18 0 | 8 1 18 | 4 10 0 | 8 1 26 7 |
| 13 | 12 2 12 | | | 16 22 30 | 12 16 50 | 16 11 39 |
| 14 | | 16 14 38 | 1 19 26 | | 1 6 11 | |
| 15 | 1 11 46 | | | 5 16 46 | 9 22 3 | 5 1 41 |
| 16 | | 5 8 21 | 9 14 10 | | | |
| 17 | 9 4 8 | | | 13 23 6 | | 13 11 18 |
| 18 | 17 18 55 | 13 3 8 | 17 17 4 | | 17 7 50 | |
| 19 | 6 1 46 7 | 2 10 24 | | 2 10 9 | 6 22 32 | 2 3 39 1 |
| 20 | 14 14 15 | 10 17 20 | 6 2 31 | 10 18 16 | | 10 16 28 1 |
| 21 | | 18 9 32 | 14 9 18 | | 14 9 43 | |
| 22 | 3 5 39 | | 3 19 21 | 18 1 55 | 3 16 40 | 18 1 6 |
| 23 | 11 23 46 | 7 2 28 | | 7 13 43 | | 7 8 40 |
| 24 | | | 11 9 1 | 15 21 10 | 11 1 18 | |
| 25 | | 15 11 35 | 19 18 24 | | | 15 5 11 |
| 26 | 19 6 44 | | | 4 15 6 | 19 2 6 | 4 23 19 |
| 27 | 8 18 11 | 4 0 53 | 8 11 5 | | 8 20 45 | |
| 28 | | 12 10 50 | | 12 6 10 | | 12 17 58 |
| 29 | 16 1 37 | 1 17 28 | 16 2 33 | 1 18 4 | 16 0 20 | 1 17 35 |
| 30 | 5 9 57 | | 5 9 27 | | 5 10 3 | |
| 31 | | 9 3 11 | 13 21 21 | 9 0 58 | 13 16 51 | 9 1 49 |

KL**Julius****Solis****Lune****Ascendēs.**

| | | | ā | īn | ō | ā | ō | ā | īn | ā |
|----|----------|--------------------------|----------|-----------|----------|----------|----------|----------|-----------|----------|
| 1 | g | Octā sci iōānis baptiste | 18 | 6 | 7 | 28 | 7 | 8 | 13 | 12 |
| 2 | h | 6 non | 19 | 3 | 8 | 11 | 7 | 21 | 13 | 15 |
| 3 | b | 5 non | 20 | 0 | 8 | 24 | 8 | 4 | 13 | 19 |
| 4 | c | 4 non | 20 | 57 | 9 | 8 | 8 | 17 | 13 | 23 |
| 5 | d | 3 non | 21 | 54 | 9 | 21 | 9 | 0 | 23 | 27 |
| 6 | e | 2 non | 22 | 51 | 10 | 4 | 9 | 13 | 13 | 30 |
| 7 | f | Non | 23 | 48 | 10 | 17 | 9 | 26 | 13 | 34 |
| 8 | g | 8 id ^o | 24 | 45 | 11 | 0 | 10 | 9 | 13 | 30 |
| 9 | h | 7 id ^o | 25 | 42 | 11 | 14 | 10 | 22 | 13 | 41 |
| 10 | b | 6 id ^o | 26 | 40 | 11 | 27 | 11 | 5 | 13 | 44 |
| 11 | c | 5 id ^o | 27 | 37 | 0 | 10 | 11 | 18 | 13 | 48 |
| 12 | d | 4 id ^o | 28 | 34 | 0 | 23 | 0 | 2 | 13 | 52 |
| 13 | e | 3 id ^o | 29 | 31 | 1 | 6 | 0 | 15 | 13 | 56 |
| 14 | f | 2 id ^o | 0 | 28 | 1 | 19 | 0 | 28 | 13 | 59 |
| 15 | g | Idus | 1 | 26 | 2 | 3 | 1 | 11 | 14 | 3 |
| 16 | h | 17 kal | 2 | 23 | 2 | 16 | 1 | 24 | 14 | 7 |
| 17 | b | 16 kal | 3 | 21 | 2 | 29 | 2 | 7 | 14 | 11 |
| 18 | c | 15 kal | 4 | 18 | 3 | 12 | 2 | 20 | 14 | 14 |
| 19 | d | 14 kal | 5 | 15 | 3 | 25 | 3 | 3 | 14 | 18 |
| 20 | e | 13 kal | 6 | 12 | 4 | 8 | 3 | 16 | 14 | 22 |
| 21 | f | 12 kal | 7 | 9 | 4 | 22 | 3 | 29 | 14 | 25 |
| 22 | g | 11 kal | 8 | 6 | 5 | 5 | 4 | 12 | 14 | 29 |
| 23 | h | 10 kal | 9 | 4 | 5 | 18 | 4 | 25 | 14 | 33 |
| 24 | b | 9 kal | 10 | 2 | 6 | 1 | 5 | 8 | 14 | 37 |
| 25 | c | 8 kal | 11 | 0 | 6 | 14 | 5 | 21 | 14 | 41 |
| 26 | d | 7 kal | 11 | 57 | 6 | 28 | 6 | 4 | 14 | 45 |
| 27 | e | 6 kal | 12 | 55 | 7 | 11 | 6 | 18 | 14 | 49 |
| 28 | f | 5 kal | 13 | 52 | 7 | 24 | 7 | 1 | 14 | 53 |
| 29 | g | 4 kal | 14 | 50 | 8 | 7 | 7 | 14 | 14 | 57 |
| 30 | h | 3 kal | 15 | 47 | 8 | 20 | 7 | 27 | 15 | 0 |
| 31 | b | 2 kal | 16 | 45 | 9 | 3 | 8 | 10 | 15 | 3 |

1475

1494

1413

| 1475 | | | 1494 | | | 1413 | | |
|------|-------|-------|------|--------|----|--------|-------|------------------|
| Lon. | Oppó. | | Lon. | Oppó. | | Lon. | Oppó. | |
| 1 | 13 | 9 37 | | | | 17 | 16 26 | |
| 2 | | | 17 | 6 49 | | 2 | 2 38 | 16 20 48 |
| 3 | 2 | 4 13 | | | | 6 | 9 10 | 10 15 51 |
| 4 | 10 | 22 22 | 6 | 1 31 | 16 | 6 23 | | |
| 5 | 18 | 18 53 | 14 | 2 12 | | 14 | 18 32 | |
| 6 | | | 3 | 10 56 | 18 | 13 51 | | 18 1 6 3 21 56 |
| 7 | 7 | 2 29 | 11 | 17 51 | 7 | 1 38 7 | 3 | 8 12 |
| 8 | 15 | 11 7 | | | 15 | 9 18 | 11 | 18 16 |
| 9 | 4 | 23 53 | 19 | 5 3 | 4 | 17 26 | 19 | 1 6 |
| 10 | | | 8 | 19 48 | | | 8 | 10 33 |
| 11 | 12 | 16 23 | | | 12 | 4 32 | | 12 0 29 7 8 8 41 |
| 12 | | | | | | | 16 | 13 33 |
| 13 | | | 16 | 5 42 | 1 | 10 58 | | 5 15 59 |
| 14 | 1 | 2 2 | 5 | 21 34 | | | 5 | 8 18 |
| 15 | 9 | 16 7 | | | 9 | 4 17 | | |
| 16 | | | 13 | 10 56 | | | 13 | 9 46 |
| 17 | 17 | 2 19 | 2 | 17 47 | 17 | 2 32 | 2 | 18 41 |
| 18 | 6 | 9 29 | 10 | 1 43 7 | 6 | 10 29 | | 6 9 13 10 1 59 |
| 19 | 14 | 3 19 | 18 | 23 45 | 14 | 18 38 | 10 | 1 43 |
| 20 | 3 | 20 50 | | | | | 18 | 12 27 |
| 21 | | | 7 | 18 14 | 3 | 7 12 | | 3 1 8 7 18 7 |
| 22 | 11 | 15 38 | | | | | 7 | 2 54 |
| 23 | | | | | 11 | 22 23 | 15 | 12 42 |
| 24 | 19 | 17 57 | 15 | 0 5 | 19 | 9 11 | | 19 17 53 |
| 25 | | | 4 | 10 54 | 8 | 23 37 | 4 | 4 53 |
| 26 | 8 | 3 8 | 12 | 18 53 | | | 12 | 17 24 |
| 27 | 16 | 10 5 | | | 16 | 10 19 | | 16 10 20 12 8 46 |
| 28 | 5 | 20 29 | 1 | 2 51 | 5 | 17 24 | 1 | 1 44 |
| 29 | | | 9 | 15 1 | | | 9 | 9 31 |
| 30 | | | | | 13 | 10 32 | | 13 2 20 17 20 0 |
| 31 | 13 | 1 35 | 17 | 23 2 | | | 17 | 6 53 |
| | | | | | | | 2 | 14 35 |

KL

Augustus

Solis

Lune

Ascendēs.

| | | | g̃m̃ l̃ s̃ g̃ l̃ s̃ g̃ l̃ b̃ m̃ ð̃ | | | | |
|----|---|-----------------------------------|--|-------|-------|-------|-----|
| 1 | c | Petri ad vincula | 17 43 | 9 17 | 8 23 | 15 8 | m 2 |
| 2 | d | Stephani pape | 18 40 | 10 0 | 9 6 | 15 12 | 3 |
| 3 | e | Inuērio sci Stephani | 19 38 | 10 13 | 9 19 | 15 16 | 3 |
| 4 | f | 2 noñ | 20 36 | 10 26 | 10 2 | 15 20 | 4 |
| 5 | g | Noñ | 21 33 | 11 9 | 10 15 | 15 24 | 5 |
| 6 | A | 8 id̃ | 22 31 | 11 22 | 10 28 | 15 28 | 5 |
| 7 | b | 7 id̃ | 23 29 | 0 6 | 11 11 | 15 31 | 6 |
| 8 | c | Lyriaci z socioꝝ eiꝝ | 24 26 | 0 19 | 11 24 | 15 35 | 7 |
| 9 | d | Uigilia | 25 24 | 1 2 | 0 7 | 13 39 | 8 |
| 10 | e | Laurentij martyris | 26 22 | 1 15 | 0 20 | 15 43 | 8 |
| 11 | f | Tyburtij martyris | 27 20 | 1 28 | 1 3 | 15 47 | 9 |
| 12 | g | Clare virginis | 28 18 | 2 12 | 1 17 | 15 51 | 0 |
| 13 | A | Idus
Dippoliti martyris | 29 16 | 2 25 | 2 0 | 15 54 | 11 |
| 14 | b | Septembꝝis Uigilia | 0 14 | 3 8 | 2 13 | 15 58 | 11 |
| 15 | c | Assumptio marie | 1 12 | 3 21 | 2 26 | 16 2 | 12 |
| 16 | d | 17 kal̃ | 2 10 | 4 4 | 3 9 | 16 6 | 13 |
| 17 | e | Octaua sci laurentij | 3 8 | 4 17 | 3 22 | 16 10 | 13 |
| 18 | f | Agapiti martyris | 4 6 | 5 1 | 4 5 | 16 14 | 14 |
| 19 | g | 14 kal̃ | 5 4 | 5 14 | 4 18 | 16 18 | 15 |
| 20 | A | 13 kal̃ | 6 3 | 5 27 | 5 1 | 16 22 | 15 |
| 21 | b | 12 kal̃ | 7 1 | 6 10 | 5 14 | 16 26 | 16 |
| 22 | c | Limothei z Symphoniã | 7 59 | 6 23 | 5 27 | 16 29 | 17 |
| 23 | d | Uigilia | 8 58 | 7 6 | 6 10 | 16 33 | 18 |
| 24 | e | Barbolomei ap̃t̃i | 9 56 | 7 20 | 6 23 | 16 37 | 18 |
| 25 | f | 8 kal̃ | 10 55 | 8 3 | 7 6 | 16 41 | 19 |
| 26 | g | 7 kal̃ | 11 53 | 8 16 | 7 19 | 16 45 | 20 |
| 27 | A | 6 kal̃ | 12 51 | 8 29 | 8 3 | 19 49 | 20 |
| 28 | b | 5 kal̃ | 13 50 | 9 12 | 8 16 | 16 53 | 21 |
| 29 | c | Decollatio Jo. baptiste | 14 48 | 9 26 | 8 29 | 16 56 | 22 |
| 30 | d | 3 kal̃ | 15 47 | 10 9 | 9 12 | 17 0 | 22 |
| 31 | e | 2 kal̃ | 16 46 | 10 22 | 9 25 | 17 4 | 23 |

| 1475 | | | | 1494 | | | | 1513 | | | | | | | | | | | | | |
|------|----|-------|----|------|----|-------|----|------|----|-------|----|----|----|----|----|----|----|----|---|---|--|
| Lon. | | Oppö. | | Lon. | | Oppö. | | Lon. | | Oppö. | | | | | | | | | | | |
| 1 | 2 | 20 | 14 | | | 2 | 10 | 53 | | | 10 | 6 | 31 | 6 | 19 | 7 | | | | | |
| 2 | | | | 6 | 16 | 52 | 10 | 22 | 41 | 6 | 1 | 14 | | | | | | | | | |
| 3 | 10 | 12 | 42 | 14 | 11 | 40 | | | | | | | | 14 | 19 | 49 | | | | | |
| 4 | 18 | 3 | 30 | 3 | 19 | 1 | | | 14 | 7 | 38 | 18 | 16 | 28 | | | | | | | |
| 5 | 7 | 10 | 24 | | | | 18 | 1 | 39 | 3 | 18 | 27 | | | 3 | 12 | 17 | | | | |
| 6 | 15 | 22 | 59 | 11 | 2 | 0 | 7 | 11 | 7 | | | 7 | 7 | 11 | | | | | | | |
| 7 | | | | 19 | 18 | 19 | 15 | 18 | 1 | 11 | 2 | 58 | 15 | 18 | 47 | 11 | 11 | 11 | 7 | | |
| 8 | 4 | 14 | 29 | | | | 4 | 4 | 10 | 19 | 10 | 41 | | | 19 | 9 | 51 | | | | |
| 9 | | | | 8 | 11 | 24 | 2 | 17 | 57 | 8 | 22 | 33 | 4 | 1 | 26 | 8 | 17 | 29 | 7 | | |
| 10 | 12 | 8 | 43 | | | | | | | | | | 17 | 10 | 11 | 7 | 16 | 14 | 9 | 1 | |
| 11 | | | | 16 | 20 | 36 | | | 16 | 6 | 12 | | 1 | 11 | 4 | | | | | | |
| 12 | 1 | 15 | 45 | | | | 1 | 3 | 26 | | | | | | | 5 | 8 | 24 | | | |
| 13 | | | | 5 | 9 | 57 | 9 | 20 | 12 | 5 | 0 | 13 | 9 | 5 | 53 | | | | | | |
| 14 | 9 | 3 | 14 | 13 | 19 | 9 | | | 13 | 19 | 45 | | | | 13 | 15 | 20 | | | | |
| 15 | 7 | 10 | 41 | | | | 17 | 11 | 38 | | | | 17 | 9 | 28 | | | | | | |
| 16 | 6 | 19 | 18 | 7 | 2 | 37 | 6 | 18 | 36 | 2 | 3 | 12 | 6 | 19 | 13 | 2 | 2 | 46 | | | |
| 17 | 4 | 19 | 1 | 10 | 12 | 26 | | | 10 | 10 | 9 | | | | 10 | 11 | 6 | | | | |
| 18 | | | | 18 | 16 | 18 | 14 | 6 | 39 | | | | 14 | 2 | 4 | 18 | 18 | 39 | | | |
| 19 | 3 | 13 | 47 | | | | 3 | 21 | 55 | 18 | 1 | 51 | 3 | 12 | 0 | | | | | | |
| 20 | | | | 7 | 11 | 7 | | | 7 | 18 | 43 | | | | 7 | 6 | 15 | | | | |
| 21 | 11 | 8 | 0 | | | | 11 | 16 | 2 | | | | | | | | | | | | |
| 22 | | | | 15 | 11 | 45 | 19 | 23 | 29 | 15 | 4 | 10 | 11 | 1 | 30 | 15 | 13 | 31 | | | |
| 23 | 19 | 4 | 25 | 4 | 20 | 25 | | | 4 | 17 | 50 | | 19 | 10 | 50 | | | | | | |
| 24 | 8 | 12 | 1 | | | | 8 | 11 | 17 | | | | 8 | 3 | 50 | 4 | 7 | 42 | | | |
| 25 | 16 | 20 | 52 | 12 | 3 | 26 | 16 | 18 | 58 | 12 | 3 | 54 | 16 | 19 | 55 | 12 | 23 | 7 | 7 | | |
| 26 | | | | 1 | 14 | 53 | | | 1 | 10 | 48 | | | | | 1 | 11 | 29 | | | |
| 27 | 5 | 9 | 54 | | | | 5 | 3 | 14 | | | | 5 | 2 | 55 | 9 | 18 | 26 | | | |
| 28 | | | | 9 | 5 | 48 | | | 9 | 20 | 26 | | 13 | 14 | 30 | | | | | | |
| 29 | 5 | 18 | 53 | | | | 13 | 2 | 31 | 17 | 23 | 44 | | | | 17 | 9 | 33 | | | |
| 30 | | | | 17 | 15 | 53 | 2 | 21 | 13 | | | | 2 | 5 | 30 | | | | | | |
| | | | | | | | | | | | | | 10 | 23 | 29 | | | | | | |

KL

September

Solis

Lune

Ascendēs.

| | | | Solis
ā m | Lune
ā ā | Ascendēs.
ā m ā | | | |
|----|---|-------------------|---|---------------|------------------------|-------|-------|----|
| 1 | f | Egidij abbatie | 17 44 | 11 5 | 10 8 | 17 8 | m 24 | |
| 2 | g | 4 non | 18 43 | 11 18 | 10 21 | 17 12 | 24 | |
| 3 | h | 3 non | 19 42 | 0 1 | 11 4 | 17 16 | 25 | |
| 4 | b | 2 non | 20 40 | 0 15 | 11 17 | 17 20 | 26 | |
| 5 | c | Non | 21 39 | 0 28 | 0 0 | 17 24 | 27 | |
| 6 | d | 8 id | 22 38 | 1 11 | 0 13 | 17 28 | 28 | |
| 7 | e | 7 id | 23 37 | 1 24 | 0 26 | 17 32 | 28 | |
| 8 | f | Natalis marie | 24 36 | 2 7 | 1 9 | 17 36 | 29 | |
| 9 | g | Bozgonij martyris | 25 34 | 2 20 | 1 22 | 17 40 | 30 | |
| 10 | h | 4 id | 26 33 | 3 4 | 2 5 | 17 44 | 30 | |
| 11 | b | Proti & Hyacinthi | 27 32 | 3 17 | 2 19 | 17 48 | 31 | |
| 12 | c | 2 id | 28 31 | 4 0 | 3 2 | 17 32 | 2 | |
| 13 | d | Idus | 29 30 | 4 13 | 3 15 | 17 56 | 3 | |
| 14 | e | 18 kal | Octobr Exalt ^o s. cruc ^{is} | 0 29 | 4 26 | 3 28 | 18 0 | 4 |
| 15 | f | 17 kal | | 1 28 | 5 10 | 4 11 | 18 4 | 4 |
| 16 | g | 16 kal | | 2 28 | 5 23 | 4 24 | 18 8 | 5 |
| 17 | h | 15 kal | | 3 27 | 6 6 | 5 7 | 18 12 | 5 |
| 18 | b | 14 kal | | 4 26 | 6 19 | 5 20 | 18 16 | 6 |
| 19 | c | 13 kal | | 5 25 | 7 2 | 6 3 | 18 20 | 7 |
| 20 | d | 12 kal | Vigilia | 6 25 | 7 15 | 6 16 | 18 24 | 8 |
| 21 | e | 11 kal | Maurici apli | 7 24 | 7 29 | 6 29 | 18 28 | 9 |
| 22 | f | 10 kal | Mauritij & socioꝝ ei ⁹ | 8 24 | 8 12 | 7 12 | 18 32 | 10 |
| 23 | g | 9 kal | | 9 23 | 8 25 | 7 25 | 18 36 | 11 |
| 24 | h | 8 kal | | 10 23 | 9 8 | 8 8 | 18 40 | 11 |
| 25 | b | 7 kal | | 11 22 | 9 21 | 8 21 | 18 44 | 12 |
| 26 | c | 6 kal | | 12 22 | 10 4 | 9 4 | 18 48 | 13 |
| 27 | d | 5 kal | Cosme & Damiani | 13 21 | 10 18 | 9 18 | 18 52 | 14 |
| 28 | e | 4 kal | | 14 21 | 11 1 | 10 1 | 18 56 | 15 |
| 29 | f | 3 kal | Michaelis archangeli | 15 20 | 11 14 | 10 14 | 19 0 | 16 |
| 30 | g | 2 kal | Hieronymi confessoris | 16 20 | 11 27 | 10 27 | 19 4 | 17 |

| 1475 | | | | 1494 | | | | 1513 | | | | | | | | | | | | | | | |
|------|----|-------|----|------|----|-------|----|------|----|-------|----|----|----|----|----|----|----|---|----|----|----|----|--|
| Lon. | | Oppō. | | Lon. | | Oppō. | | Lon. | | Oppō. | | | | | | | | | | | | | |
| 1 | 2 | 12 | 13 | 6 | 7 | 43 | 7 | | | | | 6 | 2 | 13 | | | | | | | | | |
| 2 | 10 | 2 | 17 | 7 | 14 | 20 | 57 | 10 | 15 | 36 | | | | | | | | | | | | | |
| 3 | 18 | 12 | 23 | | | | | 14 | 19 | 55 | | | 14 | 11 | 55 | | | | | | | | |
| 4 | 7 | 19 | 37 | 3 | 3 | 51 | | 18 | 12 | 40 | | 18 | 7 | 12 | | | | | | | | | |
| 5 | | | | 11 | 11 | 56 | | 7 | 20 | 25 | 3 | 4 | 49 | | 7 | 19 | 27 | 3 | 1 | 53 | | | |
| 6 | 15 | 13 | 49 | | | | | 15 | 4 | 57 | 11 | 11 | 52 | | | | | | 11 | 12 | 12 | 7 | |
| 7 | | | | 19 | 10 | 24 | | 4 | 17 | 45 | 19 | 22 | 52 | | 15 | 3 | 21 | | 19 | 19 | 10 | 1 | |
| 8 | 14 | 7 | 34 | | | | | | | | 8 | 13 | 33 | | 4 | 11 | 29 | | | | | | |
| 9 | | | | 8 | 5 | 2 | | 12 | 10 | 8 | | | | | 12 | 22 | 30 | | 8 | 4 | 33 | | |
| 10 | 12 | 2 | 28 | | | | | | | | 16 | 23 | 34 | | | | | | 16 | 7 | 20 | | |
| 11 | | | | 16 | 10 | 45 | | 1 | 20 | 2 | | | | | 1 | 4 | 48 | | | | | | |
| 12 | 1 | 4 | 31 | 5 | 21 | 28 | | | | | 5 | 15 | 40 | | 9 | 23 | 17 | | 5 | 2 | 14 | | |
| 13 | 9 | 13 | 41 | | | | | 9 | 10 | 22 | | | | | | | | | | | | | |
| 14 | 17 | 20 | 42 | 13 | 4 | 32 | | 17 | 20 | 53 | 13 | 5 | 25 | | 17 | 21 | 2 | | 13 | 4 | 7 | | |
| 15 | | | | 2 | 14 | 38 | | | | | 2 | 12 | 20 | | | | | | | 2 | 13 | 13 | |
| 16 | 6 | 7 | 23 | | | | | 6 | 4 | 5 | 10 | 20 | 18 | | 6 | 4 | 56 | | 10 | 20 | 25 | | |
| 17 | 14 | 12 | 56 | 10 | 2 | 4 | | 14 | 21 | 44 | | | | | 14 | 13 | 14 | | | | | | |
| 18 | | | | 18 | 10 | 24 | | | | | 18 | 18 | 15 | | | | | | 18 | 7 | 2 | | |
| 19 | 3 | 7 | 37 | | | | | 3 | 15 | 16 | | | | | 3 | 1 | 47 | | 7 | 21 | 26 | | |
| 20 | | | | 4 | 4 | 13 | | | | | 7 | 12 | 43 | | | | | | | | | | |
| 21 | 11 | 0 | 2 | 12 | 22 | 40 | | 11 | 10 | 12 | 15 | 18 | 57 | | 11 | 17 | 57 | | | | | | |
| 22 | 19 | 14 | 29 | | | | | 19 | 12 | 52 | | | | | | | | | 19 | 7 | 23 | | |
| 23 | 8 | 21 | 25 | 4 | 5 | 59 | | 8 | 22 | 14 | 4 | 5 | 53 | | 19 | 3 | 58 | | 4 | 23 | 43 | | |
| 24 | | | | 12 | 13 | 3 | | | | | 12 | 14 | 2 | | 8 | 18 | 35 | | 12 | 12 | 29 | 7 | |
| 25 | 16 | 10 | 30 | | | | | 16 | 5 | 13 | 1 | 21 | 59 | | 16 | 5 | 31 | | 1 | 16 | 57 | 1 | |
| 26 | | | | 1 | 5 | 57 | | 5 | 15 | 38 | | | | | 5 | 12 | 38 | | | | | | |
| 27 | 5 | 2 | 17 | 9 | 23 | 18 | | | | | 9 | 10 | 11 | | | | | | 9 | 4 | 47 | | |
| 28 | | | | | | | | 13 | 20 | 42 | | | | | | | | | | | | | |
| 29 | 13 | 12 | 25 | | | | | | | | 17 | 18 | 14 | | 13 | 5 | 41 | | | | | | |
| 30 | | | | 17 | 8 | 24 | | 2 | 15 | 29 | | | | | 2 | 24 | 6 | | 6 | 20 | 31 | | |
| 31 | 2 | 2 | 28 | 6 | 21 | 36 | | | | | 6 | 12 | 11 | | 10 | 18 | 2 | | | | | | |

KP**Octoba****Solis****Lune****Ascendēs.**

| | | | 3m | 6 | 9 | 6 | 9 | 12 | 3 |
|----|----------|-----------------------------------|-----------|----------|----------|----------|----------|-----------|-------------|
| 1 | A | | | | | | | | |
| 2 | b | 6 non | 17 | 20 | 0 | 10 | 11 | 10 | 19 8 18 |
| | | Leodegaris epi | | | | | | | |
| 3 | c | 5 non | 18 | 19 | 0 | 24 | 11 | 23 | 19 12 19 |
| | | | | | | | | | |
| 4 | d | 4 non | 19 | 19 | 1 | 7 | 0 | 6 | 19 16 29 |
| | | Francisci confessoris | | | | | | | |
| 5 | e | 3 non | 20 | 19 | 1 | 20 | 0 | 19 | 19 20 20 |
| | | | | | | | | | |
| 6 | f | 2 non | 21 | 19 | 2 | 3 | 1 | 2 | 19 24 21 |
| | | Magni confessoris | | | | | | | |
| 7 | g | Non | 22 | 19 | 2 | 16 | 1 | 15 | 19 28 22 |
| 8 | A | 8 id ^o | 23 | 19 | 2 | 29 | 1 | 28 | 19 32 23 |
| 9 | b | 7 id ^o | 24 | 19 | 3 | 13 | 2 | 11 | 19 36 24 |
| | | Dionysij z socior ei ^o | | | | | | | |
| 10 | c | 6 id ^o | 25 | 19 | 3 | 26 | 2 | 24 | 19 40 25 |
| 11 | d | 5 id ^o | 26 | 19 | 4 | 9 | 3 | 7 | 19 44 26 |
| 12 | e | 4 id ^o | 26 | 19 | 4 | 22 | 3 | 20 | 19 48 27 |
| 13 | f | 3 id ^o | 28 | 20 | 5 | 5 | 4 | 4 | 19 52 28 |
| 14 | g | 2 id ^o | 29 | 20 | 5 | 18 | 4 | 17 | 19 56 29 |
| | | Calixti pape | | | | | | | |
| 15 | A | Idus | m | 0 | 20 | 6 | 2 | 5 | 0 20 0 30 |
| 16 | b | 17 kal | | 1 | 20 | 6 | 15 | 5 | 13 20 4 1 |
| | | Nonēbris Galli confessor | | | | | | | |
| 17 | c | 16 kal | | 2 | 21 | 6 | 28 | 5 | 26 20 8 2 |
| | | Marthe hospite xpi | | | | | | | |
| 18 | d | 15 kal | | 3 | 21 | 7 | 11 | 6 | 9 20 12 3 |
| | | Luce euangeliste | | | | | | | |
| 19 | e | 14 kal | | 4 | 21 | 7 | 24 | 6 | 22 20 16 4 |
| 20 | f | 13 kal | | 5 | 22 | 8 | 8 | 7 | 5 20 20 5 |
| 21 | g | 12 kal | | 6 | 22 | 8 | 21 | 7 | 18 20 24 6 |
| | | Undecim miliu virginu | | | | | | | |
| 22 | A | 11 kal | | 7 | 23 | 9 | 4 | 8 | 1 20 28 7 |
| | | Severi episcopi | | | | | | | |
| 23 | b | 10 kal | | 8 | 23 | 9 | 17 | 8 | 14 20 32 8 |
| | | Severini epi | | | | | | | |
| 24 | c | 9 kal | | 9 | 24 | 10 | 0 | 8 | 27 20 36 9 |
| 25 | d | 8 kal | | 10 | 25 | 10 | 13 | 9 | 10 20 40 10 |
| | | Crispini z Crispiniani | | | | | | | |
| 26 | e | 7 kal | | 11 | 25 | 10 | 27 | 9 | 23 20 44 11 |
| 27 | f | 6 kal | | 12 | 26 | 11 | 10 | 10 | 6 20 48 13 |
| | | Vigilia | | | | | | | |
| 28 | g | 5 kal | | 13 | 27 | 11 | 23 | 10 | 19 20 52 14 |
| | | Symonis z iude apłoz | | | | | | | |
| 29 | A | 4 kal | | 14 | 27 | 0 | 6 | 11 | 3 20 56 13 |
| 30 | b | 3 kal | | 15 | 28 | 0 | 19 | 11 | 16 21 0 16 |
| 31 | c | 2 kal | | 16 | 29 | 1 | 2 | 11 | 29 21 4 17 |
| | | | | 17 | 29 | 1 | 16 | 0 | 12 21 8 18 |

| 1 4 7 5 | | | | 1 4 9 4 | | | | 1 5 1 3 | | | | | | | | | | | |
|---------|----|-------|----|---------|----|-------|----|---------|----|-------|----|----|----|----|----|----|----|----|----|
| Lon. | | Oppö. | | Lon. | | Oppö. | | Lon. | | Oppö. | | | | | | | | | |
| 1 | 10 | 14 | 48 | 14 | 6 | 32 | 10 | 8 | 8 | | | | | | | | | | |
| 2 | 18 | 22 | 9 | 3 | 14 | 10 | 18 | 23 | 8 | 14 | 7 | 15 | 18 | 21 | 13 | 14 | 3 | 11 | |
| 3 | 7 | 6 | 49 | | | | 7 | 6 | 3 | 7 | 3 | 14 | 40 | | | 3 | 14 | 24 | |
| 4 | | | | 11 | 0 | 19 | 15 | 18 | 42 | 11 | 21 | 42 | 7 | 6 | 49 | | | | |
| 5 | 15 | 7 | 23 | | | | | | | 19 | 14 | 2 | 15 | 13 | 44 | 11 | 22 | 40 | |
| 6 | | | | 19 | 4 | 47 | 4 | 10 | 16 | | | | 4 | 23 | 57 | 19 | 6 | 26 | |
| 7 | 4 | 2 | 17 | 8 | 23 | 39 | | | | 8 | 7 | 13 | | | | 8 | 18 | 24 | |
| 8 | 12 | 20 | 28 | | | | 12 | 4 | 36 | | | | 12 | 13 | 38 | 7 | | | |
| 9 | | | | 16 | 23 | 43 | | | | 16 | 16 | 33 | 1 | 23 | 26 | 16 | 2 | 18 | |
| 10 | 1 | 16 | 17 | | | | 1 | 11 | 46 | | | | | | | 5 | 20 | 16 | |
| 11 | 9 | 23 | 52 | 5 | 8 | 17 | 9 | 23 | 20 | 5 | 6 | 1 | 9 | 16 | 19 | | | | |
| 12 | | | | 13 | 15 | 46 | | | | 13 | 15 | 17 | | | | 13 | 15 | 54 | |
| 13 | 17 | 9 | 5 | | | | 17 | 6 | 52 | 2 | 22 | 47 | 17 | 7 | 49 | 2 | 23 | 23 | |
| 14 | 6 | 22 | 27 | 2 | 3 | 3 | 6 | 15 | 23 | | | | 6 | 14 | 50 | | | | |
| 15 | | | | 10 | 18 | 35 | | | | 10 | 8 | 44 | | | | 10 | 6 | 25 | |
| 16 | 14 | 7 | 50 | | | | 14 | 15 | 24 | | | | 14 | 3 | 0 | 18 | 22 | 13 | |
| 17 | | | | 18 | 4 | 46 | | | | 18 | 12 | 44 | 3 | 18 | 23 | | | | |
| 18 | 3 | 1 | 2 | 7 | 20 | 24 | 3 | 10 | 17 | | | | | | | 7 | 15 | 14 | |
| 19 | 11 | 14 | 48 | | | | | | | 7 | 7 | 40 | | | | | | | |
| 20 | | | | 15 | 9 | 3 | 11 | 4 | 35 | 15 | 8 | 18 | 11 | 12 | 36 | | | | |
| 21 | 19 | 0 | 31 | 4 | 16 | 2 | 19 | 0 | 58 | 4 | 17 | 0 | 19 | 20 | 7 | 15 | 0 | 47 | |
| 22 | 8 | 7 | 54 | | | | 8 | 8 | 38 | | | | 8 | 7 | 56 | 7 | 4 | 14 | 27 |
| 23 | | | | 12 | 0 | 21 | 16 | 17 | 34 | 12 | 0 | 4 | 16 | 15 | 37 | 12 | 0 | 32 | 7 |
| 24 | 16 | 2 | 55 | 1 | 23 | 38 | | | | 1 | 11 | 40 | 5 | 23 | 58 | 1 | 7 | 29 | |
| 25 | 5 | 20 | 55 | | | | 5 | 7 | 4 | | | | | | | 9 | 17 | 12 | |
| 26 | | | | 9 | 18 | 25 | | | | 9 | 2 | 42 | 13 | 23 | 27 | | | | |
| 27 | | | | | | | 13 | 15 | 52 | | | | | | | 17 | 20 | 45 | |
| 28 | 13 | 5 | 0 | 17 | 23 | 35 | | | | 17 | 12 | 54 | 2 | 18 | 15 | | | | |
| 29 | 2 | 17 | 13 | 6 | 10 | 27 | 2 | 9 | 13 | | | | | | | 6 | 15 | 52 | |
| 30 | | | | 14 | 17 | 41 | 10 | 23 | 15 | 6 | 4 | 45 | 10 | 12 | 42 | | | | |

De Intervallo et festis mobilibus.

Intervallum carnis priviale festaque mobilia quae libet anno si facile dignoscas. Animaduerte aureum numerum anni propositum in primo ordine tabulae festorum mobilium. sub quo in sequenti ordine videlicet litterarum dominicalium accipe litteram dominicalem anni tui proximo occurrentem: que erit index omnium per hanc tabulam permissorum. Nam in versu qui ab ea littera dominicali dextrorsum porrigitur primo videbis intervallum: id est tempus a natali salvatoris nostri ad dominicam quam cantatur: Esto mihi. deinde diem septuagesime et cetera quaecumque fronti tabulae inscripta sunt. Sed intervallum duos habet ordines: quorum prior docet hebdomadas integras. posterior autem concurrentes si qui anno quopiam fuerint. id est dies septenario pauciores qui septemannis integris adnumerant quos quidem accedere oportet quotiens natalis Christi domini praeter diem dominicam agit. Itaque intervallum carnis priviale tempus duorum annorum pars est: appellationem sumens a posteriori: quoniam in eo finem habet: quibus concurrentes sunt anni prioris. dies scilicet a natali ad dominicam primo sequentem quam natalis ipse alia quam dominica die peragitur. Quamobrem recte precipitur in anno bissextili quum duplex sit littera dominicalis hebdomadas quidem integras per posteriorum: concurrentes vero per priorum queri debent. Nec temere iussimus sub aureo numero litteram dominicalem in suo ordine accipi. Nam si aliquando littera dominicalis e directo aurei numeri appa-

15
reat: ea non erit conveniens nuncia festorum mobilium. sed ad sequentem proximo descendendum est. Sic enim quod patribus placuit: nunquam paschalis celebratio cum hebrea coincideret oblatione modo paschalis computus rite tractet. **E**st et alia via inveniendi quinque festa mobilia quorum claves in calendario posite sunt ad hunc modum. Quot sunt unitates in clave festorum mobilium communi superius per aureum numerum inveniunt: tot dies computa in calendario a loco clavis cuiuscumque festi mobilis. Postremus enim dies vocatur terminus festi questi. Ipsum autem festum peragi solet dominica die que primo succedit. Verum in anno bissextili cautelis quibusdam opus est. Tunc enim non solum concurrentes sed et septuagesima ac quadragesima per priorum litteram dominicalem accipi debent. reliqua vero omnia per posteriorum. Attamen quadragesima retrahenda erit per diem unum si iuxta hanc cautelam ad vigesima quartam diem Februarii aut post eam pertenerit. Quod si per clavam libeat investigare memorata festa: clavi ipsi addenda est unitas quotiens in anno bissextili septuagesima aut quadragesima queritur retracta item quadragesima per unum diem si in vigesima quarta Februarii aut post eam inventa fuerit.

Sequitur tabula festorum mobilium.

| 16 | Aureus numeris | Littera dominical | Intervallū ad Effe | Concurrentes | Jan. septuagesima | Feb. Quadragesima | Martii. Pasca | April. Rogationes | Maij Pentecostes | Maij Corporis xpi | Deb. a pē. ad. i. o. ba. | Dies superflui. | Deb. a pē. ad. adu. d. | Novēbr. Aduēt. d. | Deb. ab adu. ad. na. | Dies superflui. |
|-----------|-----------------------|--------------------------|---------------------------|---------------------|--------------------------|--------------------------|----------------------|--------------------------|-------------------------|--------------------------|---------------------------------|------------------------|-------------------------------|--------------------------|-----------------------------|------------------------|
| 5 | d | 5 | 3 | 18 | 8 | 22 | 26 | 10 | 21 | 6 | 3 | 29 | 29 | 3 | 5 | |
| | e | 5 | 4 | 19 | 9 | 23 | 27 | 11 | 22 | 6 | 2 | 29 | 30 | 3 | 4 | |
| 13 | f | 5 | 5 | 20 | 10 | 24 | 28 | 12 | 23 | 6 | 1 | 29 | 31 | 3 | 3 | |
| 2 | g | 5 | 6 | 21 | 11 | 25 | 29 | 13 | 24 | 6 | 0 | 29 | 2 | 3 | 2 | |
| | H | 6 | 0 | 22 | 12 | 26 | 30 | 14 | 25 | 5 | 6 | 29 | 3 | 3 | 1 | |
| 10 | b | 6 | 1 | 23 | 13 | 27 | 31 | 15 | 26 | 5 | 5 | 28 | 27 | 4 | 0 | |
| | c | 6 | 2 | 24 | 14 | 28 | 2 | 16 | 27 | 5 | 4 | 28 | 28 | 3 | 6 | |
| 18 | d | 6 | 3 | 25 | 15 | 29 | 3 | 17 | 28 | 5 | 3 | 28 | 29 | 3 | 5 | |
| 7 | e | 6 | 4 | 26 | 16 | 30 | 4 | 18 | 29 | 5 | 2 | 28 | 30 | 3 | 4 | |
| | f | 6 | 5 | 27 | 17 | 31 | 5 | 19 | 30 | 5 | 1 | 28 | 1 | 3 | 3 | |
| 15 | g | 6 | 6 | 28 | 18 | 1 | 6 | 20 | 31 | 5 | 0 | 28 | 2 | 3 | 2 | |
| 4 | H | 7 | 0 | 29 | 19 | 2 | 7 | 21 | 1 | Junij | 4 | 6 | 28 | 3 | 1 | |
| | b | 7 | 1 | 30 | 20 | 3 | 8 | 22 | 2 | 4 | 5 | 27 | 29 | 4 | 0 | |
| 12 | c | 7 | 2 | 31 | 21 | 4 | 9 | 23 | 3 | 4 | 4 | 27 | 28 | 3 | 6 | |
| 1 | d | 7 | 3 | 1 ^{icbr} | 22 | 5 | 10 | 24 | 4 | 4 | 3 | 27 | 29 | 3 | 5 | |
| | e | 7 | 4 | 2 | 23 | 6 | 11 | 25 | 5 | 4 | 2 | 27 | 30 | 3 | 4 | |
| 9 | f | 7 | 5 | 3 | 24 | 7 | 12 | 26 | 6 | 4 | 1 | 27 | 1 | 3 | 3 | |
| | g | 7 | 6 | 4 | 25 | 8 | 13 | 27 | 7 | 4 | 0 | 27 | 2 | 3 | 2 | |
| 17 | H | 8 | 0 | 5 | 26 | 9 | 14 | 28 | 8 | 3 | 6 | 27 | 3 | 3 | 1 | |
| 6 | b | 8 | 1 | 6 | 27 | 10 | 15 | 29 | 9 | 3 | 5 | 26 | 27 | 4 | 0 | |
| | c | 8 | 2 | 7 | 28 | 11 | 16 | 30 | 10 | 3 | 4 | 26 | 28 | 3 | 6 | |
| 14 | d | 8 | 3 | 8 | 29 | 12 | 17 | 31 | 11 | 3 | 3 | 26 | 29 | 3 | 5 | |
| 3 | e | 8 | 4 | 9 | 2 | 13 | 18 | 1 | 12 | Junij | 3 | 2 | 26 | 30 | 3 | 4 |
| | f | 8 | 5 | 10 | 3 | 14 | 19 | 2 | 13 | 3 | 1 | 26 | 1 | 3 | 3 | |
| 11 | g | 8 | 6 | 11 | 4 | 15 | 20 | 3 | 14 | 3 | 0 | 26 | 2 | 3 | 2 | |
| | H | 9 | 0 | 12 | 5 | 16 | 21 | 4 | 15 | 2 | 6 | 26 | 3 | 3 | 1 | |
| 19 | b | 9 | 1 | 13 | 6 | 17 | 22 | 5 | 16 | 2 | 5 | 25 | 27 | 4 | 0 | |
| 8 | c | 9 | 2 | 14 | 7 | 18 | 23 | 6 | 17 | 2 | 4 | 25 | 28 | 3 | 6 | |
| | d | 9 | 3 | 15 | 8 | 19 | 24 | 7 | 18 | 2 | 3 | 25 | 29 | 3 | 5 | |
| | e | 9 | 4 | 16 | 9 | 20 | 25 | 8 | 19 | 2 | 2 | 25 | 30 | 3 | 4 | |
| | f | 9 | 5 | 17 | 10 | 21 | 26 | 9 | 20 | 2 | 1 | 25 | 1 | 3 | 3 | |
| | g | 9 | 6 | 18 | 11 | 22 | 27 | 10 | 21 | 2 | 0 | 25 | 2 | 3 | 2 | |
| | H | 10 | 0 | 19 | 12 | 23 | 28 | 11 | 22 | 1 | 6 | 25 | 3 | 3 | 1 | |
| | b | 10 | 1 | 20 | 13 | 24 | 29 | 12 | 23 | 1 | 5 | 24 | 27 | 4 | 0 | |
| | c | 10 | 2 | 21 | 14 | 25 | 30 | 13 | 24 | 1 | 4 | 24 | 28 | 3 | 6 | |

De coniunctionibus ac
oppositionib⁹ luminariū.



Coniunctiones atq; op-
positiones luminariū
vere haud difficulter de
prehendēt p̄ ambulis
quibusdā pri⁹ expositis.

Unusq; igit̄ duodeci
mensū anni duas habet partes aut fa-
cies: quarū dextra quidē ad calenda-
rium attinet. Eius prim⁹ ordo habet
numerum dierū mensis cuiuslibet qui
3 i. nusq; supat. Sequēs ordo septenis
constat litteris: quarū quelibet ad cer-
tam septimane diem refetur. ⁊ que ad
dñicā spectat diem lra dñicalis vulgo
nuncupat̄. Succedunt itē triplices nu-
meri nonarū: iduū: atq; calendarum.
Cuiuslibet nempe mensis dies tripha-
riam distinguūt: in calendas videlicet
nonas ⁊ idus: ita ut primi singulorum
mensū dies calende nūcupent̄: sequē-
tibus quaternis aut senis qñq; diebus
qui dicunt̄ none. itē octonis in quoli-
bet mense idib⁹. dies autē reliq; oēs ca-
lende numerate vocant̄: numeris tam-
earū q̄ p̄cedentiū appellationū conti-
nue decrecentib⁹. Quāuis autē calen-
de initiales none itē atq; idus a mēse
in quo scribunt̄ denotatiōē sumant:
calende it̄ numerate ad sequentē refe-
runt̄ menses: quāobrem ⁊ iuxta supre-
mam earū nomē mēsis succedētis ad-
notat̄. Deinde occurrūt noīa scōp̄ quo-
rundā quib⁹ dies mensūz dicati sunt.
Postremo loco sunt tres colūne nu-
merozū binis distincte lineis: quarum
prima est Solis veluti inscriptio ⁊ d-
monet: cui⁹ priores quidē numeri gra-
dus integros veri motus solis: poste-

riores autē minutias graduū continē
Suntq; gradus illi atq; minutie ei⁹ fi-
gni quod p̄xime supra scribit̄. Reli-
quas duas colūnulas luna sibi vendi-
cat: quarum vtraq; duplices habet nu-
meros: priorib⁹ quidem signa: postero-
ribus aut gradus significantibus. Si-
nistra deniq; facies post numerū die-
rum attramēto scriptum sex habet co-
lumnas quinq; vacuis interstitijs sepa-
ratas: quarū vnaqueq; triplici nume-
rorum constat ordine non quidē con-
tinue vbiq; sed saltim nōnunq; succe-
dentium. Primus ordo habet aureūz
numerū rubro scriptum: secundus ho-
ras: tertius minuta horarū c̄mplecti-
tur. De columne tribus cyclis decēno-
talibus accōmodant̄: quozum videli-
cet quiuis decēnonem annos cōtinet.
Primus initium sumit ab āno christi
domini. 1475. secūsus ab anno. 1494
⁊ tertius anno. 1513. quos etiam an-
nos numeri sui supra binas colūnas
positi representant. Dozum autem cy-
clorū cuiuslibet due ex predictis sex co-
lumnis adaptant̄. Prior cuiuslibet cy-
cli columna coniunctionibus: poste-
rior autē oppositionib⁹ luminariū ve-
ris inseruit veluti inscriptiōes que sūt
in capitibus columnarū admonent.

¶ Quando itaq; libet scire tempus cō-
iunctionis vere luminariū mense quo
piam vsuali: quere aureum numerum
anni p̄positi in columna coniunctio-
nū cycli currentis (currentez vocamus
in quo annus p̄positus cōtinetur) ⁊
e directo ipsius a dextris quidem vide-
bis horas ⁊ minutias si que sint. a fini-
stris autem in extremo ordine nume-
rum diei a cuius meridie computare
debent hore euz minutijs pri⁹ accepte

quibus exactis fit talis cōiunctio. Quod si velis diē huiusmodi insigni quadam appellatiōe pronunciare quere numerū eius i primo ordine calendarij. Iuxta enī apparebit quota fit septimane diēs aut cui celebritati dicata vicina ve sit. Nō aliter inuenies tempus oppositiōnis vere si aureū numerum in colūna oppositiōnū animaduertas. Sed hec quidē simpliciter accipienda sunt sicuti monuim⁹ si a minutis. Nō prominet gnomuncul⁹ aliq̄s: id est signū quoddā huiusmodi. 7 J. siue sursum vergat siue deorsū. Nā si tale signū apparuerit in interstitio columnarum: hōrē dudū accepte ad aliū diē trahunt eū sc̄z iuxta quē definit huiuscemodi gnomuncul⁹. Verbi gratia: cōiunctio que in tertio cyclo notat iuxta vigesimā secundā Januarij diē ad vigesimā primā eiusdē attinet: hoc est: hōrē. 15. cum minutis. 18. nō a meridie vigesime secundē diei quā indicat aure⁹ numer⁹. 17 sed a meridie vigesime prime sunt numerande: quā gnomuncul⁹ sursum portectus illic definit. Sic oppositiō secundī cycli quē iuxta nonā diē Septembris scribit ad octauam retorquet. et que iuxta octauā ponit ad septimā reduci debet. Pari rōne oppositiō tertij cycli quē 3. 23 diē Nouembris statuit ad. 25. eiusdem spectat gnomunculo illic ad tertium descendere versū. Itē cōiunctio primi cycli iuxta tertiā decēbris diē apparens ad secundā eiusdem. et que secundē diei adscribit ad primā attinet gnomunculis illic duobus quē admodū in Septēbri coherentib⁹. Sic autē numer⁹ quosdā alienis sistere sedib⁹ ratio opificij coegebat. Verū oēm hanc supputationē hōrarū cū minutis suis ad meridianū

oppidi Nurembergenfis referri voluimus quod locus ille dignus videbatur quē nouo litterarū genere celebrarem⁹. Hoc etiā accedēte quod in ea habitatiōe nostra p̄sens opusculum condidimus. Nec tamē idcirco alios quosuis locos vsu calendarij nostri fraudauimus. sed ipsū quasi mun⁹ cōe toti ferme europe impartiuim⁹. Preposita regionū tabula que docet quantū quouis alius loc⁹ numeris scriptis addē debeat aut detrabere. Namque in ea post ordinē prouinciarū ac ciuitatū insigniorū ad finistrā eunti mor alterutra lra. m. 7. a occurrit. m. quē significans quod numer⁹ sequēs minui debet a tpe p aureū numerū superi⁹ accepto. a. vō quod talis numerus addi debet siue habeat hōrē aliquā cū minutis: siue t̄modo minuta. Prior enim ordo colūnule litteras m. 7. a. sequentis hōrariā habet inscriptionē. posterior autē minutias exhibet. Facta igitur additione aut minutione put nota occurrens admonet: habebit temp⁹ coniunctionis aut oppositiōnis vere ad locū ppositum ac si ois supputatio ad meridianū eiusdem loci directa foret. Scribere autē oia loca quē nra tempestate habitant imensū erat quocirca paucas insigniores habitations exarauimus: que vō in vicinia singularū iacent ad scriptas tanquā primarias reducēt: paucillo quoque interuallo nullā differentiam notatu dignā importate. Porro ut fil vniuersum hui⁹ tabule tenorē interpretemur postremus ordo simplex ostēdit quot gradibus polus mundi Aquiloni⁹ supra hōrizontē cuiusuis loci adnotat extollit. Is autē numer⁹ quē admodū vsu veniat inferius aperiet.

De eclipſibus luminariū.



Eclipſis ſolis aut lūe oi
eo anno futura eſt cui⁹
numerus a p̄mo anno
chriſti domini coeptus
in capite cuiuſpiam co
lumne eclipſalis appa
ret. Tempus autē eclipſis numero ſuc
cedenti deprehendit tribus conſtante
particulis ſeparatim ſcriptis: quarum
prima diem menſis qui mox etiā ſub
iungit̄ oſtendit. ſecunda horas. tertia
minutias: quibus a meridie talis diei
computatis medium eclipſis euenit.
Sequit̄ dimidia duratio q̄ duplici ple
rūq; cōſtat numero hore videlicet vni⁹
ac minutoꝝ: nōnunq; vō minutis dun
taxat contenta eſt. Vocamus autē di
midiam duratiōē id temp⁹ quod eſt
ab initio eclipſis vſq; ad mediuz eius
aut ab eo medio vſq; ad finem. Qua
propter ſi talis dimidia duratio a me
dio eclipſis dematur: reſtabit initium
eclipſis: eademq; ad medium eclipſis
appoſita finem eclipſis cōmonſtrabit
Poſtremo ſiqua eclipſis particularis
fuerit p̄icta eius adnotant̄: id eſt quot
duodecime ex diametro luminaris de
ficiētis occultabunt̄. Que res etiā ſi
guratiōē haud incōmoda repreſentat̄.
Nam quanta pars circuli luminare ſi
gnificantis atramento tincta eſt: tan
tam ex ſupficie ipſius luminaris nobis
obuerſa defecturam eſſe pronūciabis
ſitu etiā deficientis partis innotefcen
te. Inferior q̄ppe luminaris pars defi
ciet ſi inferior pars circuli nigella ſit. ſu
perior autem ſi ſuperior circuli portio
atra fuerit. Eclipſi vō vniuerſalem cir

culus oīno niger ſignificat. Sz huc q̄z
ſpectat tabula regionuz ſi aliubi q̄z in
oppido Nurebergenti degas. Quantū
enim ſuperius addidiſti tempoz con
iunctionis ul' oppoſitiōis vere aut ab
eo detraxiſti: tantūz hic quoq; ad me
diū eclipſis adde aut ex eo minue put
nota. a. uel. m. in tabula regionum ap
parens admonet.

De loco ſolis vero.



Erum ſolis locum hoc
pacto cognoſces In tra
tabulā ſolis ſubſcri p̄az
cum numero anni pro
poſiti: ⁊ quod iurta eū
apparebit adde ei nu
mero qui ſcribit̄ in colūnula ſolis ad
diem propoſitam: priorē videlicet nu
merum priorī: ⁊ poſtiorē qui ē mi
nutorum poſteriorī. At ſi ſūma minu
torum vltra. 60. euaserit: pro. 60. abla
tis adde gradum vnum: reliquis in lo
co ſuo dimiſſis. Verū i anno cōmuni
poſt diez ſancti Matthei apoſtoli vſq;
ad finem anni facta additiōe huiuſce
modi demendus eſt gradus vnus. Nō
enim relinquetur oſtendet verū locuz
ſolis in gradibus ⁊ minutis ad meri
diem diei propoſite. Quantū autē ad
di ul' minui oporteat propter meridia
norum differentiā: quoniaz illud per
exiguū eſt conſulto preterimus.

Tabula Solis.

| Anni | g̃ | m̃ | Anni | g̃ | m̃ | Anni | g̃ | m̃ | Anni | g̃ | m̃ |
|------|----|----|------|----|----|------|----|----|------|----|----|
| 1475 | 0 | 16 | 1490 | 0 | 38 | 1505 | 1 | 0 | 1520 | 0 | 21 |
| 1476 | 0 | 2 | 1491 | 0 | 23 | 1506 | 0 | 45 | 1521 | 1 | 7 |
| 1477 | 0 | 28 | 1492 | 0 | 9 | 1507 | 0 | 30 | 1522 | 0 | 52 |
| 1478 | 0 | 33 | 1493 | 0 | 55 | 1508 | 0 | 16 | 1523 | 0 | 37 |
| 1479 | 0 | 18 | 1494 | 0 | 40 | 1509 | 1 | 2 | 1524 | 0 | 23 |
| 1480 | 0 | 3 | 1495 | 0 | 25 | 1510 | 0 | 47 | 1525 | 1 | 9 |
| 1481 | 0 | 49 | 1496 | 0 | 11 | 1511 | 0 | 32 | 1526 | 0 | 54 |
| 1482 | 0 | 34 | 1497 | 0 | 57 | 1512 | 0 | 18 | 1527 | 0 | 39 |
| 1483 | 0 | 19 | 1498 | 0 | 42 | 1513 | 1 | 4 | 1528 | 0 | 25 |
| 1484 | 0 | 5 | 1499 | 0 | 27 | 1514 | 0 | 49 | 1529 | 1 | 11 |
| 1485 | 0 | 51 | 1500 | 0 | 12 | 1515 | 0 | 34 | 1530 | 0 | 56 |
| 1486 | 0 | 36 | 1501 | 0 | 58 | 1516 | 0 | 20 | 1531 | 0 | 41 |
| 1487 | 0 | 21 | 1502 | 0 | 43 | 1517 | 1 | 6 | 1532 | 0 | 27 |
| 1488 | 0 | 7 | 1503 | 0 | 28 | 1518 | 0 | 51 | 1533 | 1 | 13 |
| 1489 | 0 | 53 | 1504 | 0 | 14 | 1519 | 0 | 36 | 1534 | 0 | 58 |

De loco lune vero.

Locus lune verus facile deprehendēt si pri^o instrumenti lunaris partes dignoscēt. Est itaq; in eo instrumēto cōdiacus duodecim signorū suis caracterib⁹ distinctorū. Signa tri genos habent grad⁹. hic autē vrgente loci angustia, vnūquodq; spaciolum duas representat gradus. Intra cōdiacum ē equator lune numeros ab vno ad sex vltro citroq; gestas. Ad sūt etiā due rotule mobiles duobus numeris lunariibus i calendario positis respōdentes: duobusq; qui i tabula radicū lune iuxta numeros annorū scribunt quorū prior signa: posterior autē gra-

duas representat. His cognitīs statuē de sunt radices lune at semel inuente p totum quēuis annū i promptu sint. Intra itaq; tabulā radicū lune cū numero āni ppositi: z numerū lune priorē qui signis z gradibus constat cōputa in cōdiaco ab ariete vbi crux est incipiendo: ita ut aries habeat. 1. taurus. 2. gemini. 3. z sic deinceps. vbi autē numerus ille definet pone filū instrumenti. rotulamq; maiorem volue donec caput eius. id est crux sub filo iaceat. z ita manentē rotulā fige intrinsecus cum cera. talis enī erit situs eius p totū annū. Similiter posteriori numero sūm signa cōdiaci computato: filorū ad fines talis numeri tracto volue

rotulā minorē donec caput eius filo occultet: i eoq; situ fige rotulā ut p totū ānū illic māeat. Quoties itaq; locū lune i zodiaco scire cupis numez lune priorē q in calendario ad diez ppositā script^o ē cōputa a capite maioris rotule. ad finēq; ei^o pone filiū in strumēti. mox enī sub ipso filo habebis i zodiaco loc^o lune medi^o. Unde r^{er} cōtinuo emerget si numerū lune posteriorē i calēdario positū cōpu

taueris a capite minoris rotule. nā sub filo ad exitū talis nūeri translato in eq̄toze lune offerent grad^o addēdi ad mediū lune locū supra inuētur si i inferiori semicirculo eq̄tozis accipiant. aut minuendi ab eodē si in superiori. Semicirculos autē noto eos q iura arietē ac librā incipiūt desinūtq;. Verū in āno bis sextili a festo sacti Mathe apli vsq; ad exitū anni vtriq; numero lunari grad^o 13. supaddi oportebit.

Tabula radicum lune

| Anni | ā | g̃ | ā | g̃ | Anni | ā | g̃ | ā | g̃ | Anni | ā | g̃ | ā | g̃ | Anni | ā | g̃ | ā | g̃ |
|------|----|----|----|----|------|----|----|---|----|------|----|----|----|----|------|----|----|----|----|
| 1475 | 6 | 23 | 2 | 1 | 1490 | 1 | 7 | 0 | 3 | 1505 | 7 | 20 | 10 | 6 | 1520 | 1 | 20 | 7 | 26 |
| 1478 | 11 | 2 | 4 | 29 | 1491 | 5 | 16 | 3 | 2 | 1506 | 11 | 29 | 1 | 5 | 1521 | 6 | 13 | 11 | 8 |
| 1476 | 3 | 25 | 8 | 11 | 1492 | 9 | 25 | 6 | 1 | 1407 | 4 | 9 | 4 | 4 | 1522 | 10 | 22 | 2 | 7 |
| 1478 | 8 | 4 | 11 | 10 | 1493 | 2 | 18 | 9 | 13 | 1508 | 8 | 18 | 7 | 3 | 1523 | 3 | 2 | 5 | 6 |
| 1479 | 0 | 14 | 2 | 9 | 1494 | 6 | 27 | 0 | 11 | 1509 | 1 | 11 | 10 | 14 | 1524 | 7 | 11 | 8 | 4 |
| 1480 | 4 | 23 | 5 | 7 | 1495 | 11 | 7 | 3 | 10 | 1510 | 5 | 20 | 1 | 13 | 1525 | 0 | 4 | 11 | 16 |
| 1481 | 9 | 16 | 8 | 19 | 1496 | 3 | 16 | 7 | 9 | 1511 | 10 | 0 | 4 | 12 | 1526 | 4 | 13 | 2 | 15 |
| 1482 | 1 | 25 | 11 | 18 | 1497 | 8 | 9 | 9 | 21 | 1512 | 2 | 9 | 7 | 11 | 1527 | 8 | 22 | 5 | 14 |
| 1483 | 6 | 4 | 2 | 16 | 1498 | 0 | 18 | 0 | 19 | 1513 | 7 | 1 | 10 | 22 | 1528 | 1 | 2 | 8 | 12 |
| 1484 | 10 | 14 | 5 | 15 | 1499 | 4 | 27 | 3 | 18 | 1514 | 11 | 11 | 1 | 21 | 1529 | 5 | 24 | 11 | 24 |
| 1485 | 3 | 6 | 8 | 27 | 1500 | 9 | 7 | 6 | 17 | 1515 | 3 | 20 | 4 | 20 | 1530 | 10 | 4 | 2 | 23 |
| 1486 | 7 | 16 | 11 | 26 | 1501 | 1 | 29 | 9 | 29 | 1516 | 8 | 0 | 7 | 18 | 1531 | 2 | 13 | 5 | 22 |
| 1487 | 11 | 25 | 2 | 24 | 1502 | 6 | 9 | 0 | 27 | 1517 | 0 | 22 | 11 | 0 | 1532 | 6 | 22 | 8 | 20 |
| 1488 | 4 | 5 | 5 | 23 | 1503 | 10 | 18 | 3 | 26 | 1518 | 5 | 2 | 1 | 29 | 1533 | 11 | 15 | 0 | 2 |
| 1489 | 8 | 27 | 9 | 5 | 1504 | 2 | 27 | 6 | 25 | 1519 | 9 | 11 | 4 | 28 | 1534 | 3 | 24 | 3 | 1 |



Uoniā aut nōnulli q̄ri tant tpa incisioni venarū m̄ apta: habetq; luna plurimū potestatis in ea re alijs atq; alijs recepta signis: non absent aneū videt̄ hic atterere generales quasdā signozū pprietates: quibusq; partibus humani corpis singula ac cōmodari soleant: ut q̄uis breui ac crasso quodā argumēto signa apta in eptaq; internoſcant. Pleniorē nanq; hui^o rei tractatū alibi reddemus. *Agit*

aries ut p̄hibent auctores calid^o z fic^o cus est atq; igneus. caput hoīs totum sibi vendicans. aptus incisioni vene.

Taur^o frigid^o fic^o terrensq; ad colū spectat: inept^o sanguini fundendo.

Gemini calidi humidī z aerei: humeros brachia manusq; tutātur inutiles venis aperiendis. Cancer frigidus humidus aqueus: pectori stomacho pulmoniq; accommodat. varius in minutiōe sanguis. Leonē calidū z ficcū igneūq; eē p̄hibet: dorū ac lassa respiciētē piculosū sanguini emittēdo

Uirginis signū frigidus siccū terreūq;
ad ventrē ac intestina spectat: indiffe-
rens vene secande. Libra calida hu-
mida aerea: vmbilicū lumbos inferio-
raq; vētris foritur: vtilis sanguini mi-
nuendo. Scorpio frigidus humidus
aquaticusq; pudenda gubernat: incer-
tus ad venam incidendam. Sagi-
ctario calido sicco z igneo: core adscri-
bunt. vtili ad incisionem vene. La-
pricornus frigidus siccus ac terreus: ha-
bet genua: ad sanguinis autem minu-
tionē inutilis existit. Aquarius cali-
dus humidus z aereus: ad crura referē
indifferens vene incidende. Pisces
quoq; indifferentes sūt frigidi humidi
z aquatici: pedesq; in tutelā recipiunt.

Illud autē non est obliuioni preter-
eundū q; z si luna in signo quopiā fue-
rit ad minutionez sanguinis electo nō
tamen attingi debet pars corporis ei-
dem signo allegata. Preterea iuuetu-
ti quidē luna crescēs: senibus autem
decrecens eligi consuevit.

De magnitudine diei.



Quantitatem diei vbi
vis agnoscēdā propria
exposita ē tabula: i cuius
fronte numeri quidam
statuūt eleuationē poli
borealis significantes.

in lateribus autē extremis signa zodiaci
cū ternis gradibus suis adiacēt. Illic
ergo ad quāuis diē accipe signū z gra-
dum solis. Nā e directo ipsius sub nu-
mero eleuationis polaris apparebit
quantitas tēporis semidiurni i horis
z minutis suis si sol in aliquo signorū
borealiū fuerit: aut quantitas tēporis se-
minocturni si in australi quopiā exti-
terit: quōd tempus seminocturnuz ex. 12:
horis ablatū relinquit quantitātē tēporis
semidiurni. Ea autē quātitate duplica-
ta totū tempus diurnū constabit. Quū
autē dies cū nocte sua simul viginti quā-
tuor horis constent: si quantitātē diei
ex viginti quātuor horis demas quanti-
tas noctis relinquet. Quōd si gradus solis
nō appareat in alterutro extremo z or-
dinū: considerabis duos iuxta eū vici-
niores. Nam penes sitū eius ad illos
proportionaliter coniectabis quanti-
tātē tēporis semidiurni mediam quodaz
modo inter duas quantitates dierum
duobus illis vicinioribus gradibus re-
spondētes. Porro semidiurni tēporis
quātitas indicat qua hora sol occidit
sicut z seminocturnum tempus ortum
solis declarat. Ut autē signorū caracte-
res agnosces hic apposita est tabella
ostendens etiam que borealia queve
australia nuncupentur.

Borealia

| | |
|---|--------|
| ♈ | Aries |
| ♉ | Taurus |
| ♊ | Gemini |
| ♌ | Lancer |
| ♍ | Leo |
| ♎ | Virgo |

Australia

| | |
|---|-------------|
| ♏ | Libra |
| ♐ | Scorpio |
| ♑ | Sagittarius |
| ♒ | Lapricornus |
| ♓ | Aquarius |
| ♈ | Pisces |

Tabula quantitatis dierum.

| | 36 | 37 | 38 | 39 | 40 | 41 | 42 | 43 | 44 | 45 | |
|----|------|------|------|------|------|------|------|------|------|------|-----|
| 6 | h m | h m | h m | h m | h m | h m | h m | h m | h m | h m | 6 |
| NY | 6 0 | 6 0 | 6 0 | 6 0 | 6 0 | 6 0 | 6 0 | 6 0 | 6 0 | 6 0 | 30 |
| 3 | 6 3 | 6 4 | 6 4 | 6 4 | 6 4 | 6 4 | 6 4 | 6 4 | 6 4 | 6 5 | 27 |
| 6 | 6 7 | 6 7 | 6 8 | 6 8 | 6 8 | 6 8 | 6 9 | 6 9 | 6 9 | 6 10 | 24 |
| 9 | 6 10 | 6 11 | 6 11 | 6 12 | 6 12 | 6 12 | 6 13 | 6 13 | 6 14 | 6 14 | 21 |
| 12 | 6 14 | 6 14 | 6 15 | 6 15 | 6 16 | 6 17 | 6 17 | 6 18 | 6 18 | 6 19 | 18 |
| 15 | 6 17 | 6 18 | 6 19 | 6 19 | 6 20 | 6 21 | 6 21 | 6 22 | 6 23 | 6 24 | 15 |
| 18 | 6 21 | 6 22 | 6 22 | 6 23 | 6 24 | 6 25 | 6 26 | 6 27 | 6 27 | 6 29 | 12 |
| 21 | 6 24 | 6 25 | 6 26 | 6 27 | 6 28 | 6 29 | 6 30 | 6 31 | 6 32 | 6 33 | 9 |
| 24 | 6 27 | 6 28 | 6 30 | 6 31 | 6 32 | 6 33 | 6 34 | 6 35 | 6 36 | 6 38 | 6 |
| 27 | 6 31 | 6 32 | 6 33 | 6 34 | 6 36 | 6 7 | 6 38 | 6 40 | 6 41 | 6 43 | 3 |
| m | 6 34 | 6 35 | 6 37 | 6 38 | 6 39 | 6 41 | 6 42 | 6 44 | 6 45 | 6 47 | NYK |
| 3 | 6 37 | 6 39 | 6 40 | 6 41 | 6 43 | 6 45 | 6 46 | 6 48 | 6 50 | 6 51 | 27 |
| 6 | 6 40 | 6 42 | 6 43 | 6 45 | 6 47 | 6 48 | 6 50 | 6 52 | 6 54 | 6 56 | 24 |
| 9 | 6 43 | 6 45 | 6 47 | 6 48 | 6 51 | 6 52 | 6 54 | 6 56 | 6 58 | 7 0 | 31 |
| 12 | 6 46 | 6 48 | 6 50 | 6 52 | 6 54 | 6 56 | 6 58 | 7 0 | 7 2 | 7 4 | 18 |
| 15 | 6 49 | 6 51 | 6 53 | 6 55 | 6 58 | 6 59 | 7 1 | 7 4 | 7 6 | 7 8 | 15 |
| 18 | 6 52 | 6 54 | 6 56 | 6 58 | 7 0 | 7 3 | 7 5 | 7 7 | 7 10 | 7 12 | 12 |
| 21 | 6 55 | 6 57 | 6 59 | 7 1 | 7 3 | 7 6 | 7 8 | 7 11 | 7 13 | 7 16 | 9 |
| 24 | 6 57 | 7 0 | 7 2 | 7 4 | 7 6 | 7 9 | 7 11 | 7 14 | 7 17 | 7 20 | 6 |
| 27 | 7 0 | 7 2 | 7 4 | 7 7 | 7 9 | 7 12 | 7 15 | 7 17 | 7 20 | 7 23 | 3 |
| II | 7 2 | 7 4 | 7 7 | 7 9 | 7 12 | 7 15 | 7 17 | 7 20 | 7 23 | 7 26 | NY |
| 3 | 7 4 | 7 7 | 7 9 | 7 12 | 7 14 | 7 17 | 7 20 | 7 23 | 7 26 | 7 29 | 27 |
| 6 | 7 6 | 7 9 | 7 11 | 7 14 | 7 17 | 7 19 | 7 25 | 7 26 | 7 29 | 7 32 | 24 |
| 9 | 7 8 | 7 10 | 7 13 | 7 16 | 7 19 | 7 22 | 7 25 | 7 28 | 7 31 | 7 35 | 21 |
| 12 | 7 9 | 7 12 | 7 15 | 7 17 | 7 20 | 7 23 | 7 27 | 7 30 | 7 33 | 7 37 | 18 |
| 15 | 7 11 | 7 13 | 7 16 | 7 19 | 7 22 | 7 25 | 7 28 | 7 32 | 7 35 | 7 39 | 15 |
| 18 | 7 12 | 7 14 | 7 17 | 7 20 | 7 23 | 7 26 | 7 30 | 7 33 | 7 37 | 7 40 | 12 |
| 21 | 7 13 | 7 15 | 7 18 | 7 21 | 7 24 | 7 27 | 7 31 | 7 34 | 7 38 | 7 42 | 9 |
| 24 | 7 13 | 7 16 | 7 19 | 7 22 | 7 25 | 7 28 | 7 32 | 7 35 | 7 39 | 7 42 | 6 |
| 27 | 7 14 | 7 16 | 7 19 | 7 22 | 7 25 | 7 29 | 7 32 | 7 35 | 7 39 | 7 43 | 3 |
| 30 | 7 14 | 7 17 | 7 19 | 7 22 | 7 26 | 7 30 | 7 32 | 7 36 | 7 39 | 7 43 | 66b |

Tabula quantitatis dierum.

| | 46 | 47 | 48 | 49 | 50 | 51 | 52 | 53 | 54 | 55 | | |
|----|------|------|------|------|------|------|------|------|------|------|------|----|
| ♁ | ♁ m | ♁ m | ♁ m | ♁ m | ♁ m | ♁ m | ♁ m | ♁ m | ♁ m | ♁ m | ♁ m | ♁ |
| ♁ | 6 0 | 6 0 | 6 0 | 6 0 | 6 0 | 6 0 | 6 0 | 6 0 | 6 0 | 6 0 | 6 0 | 30 |
| 3 | 6 5 | 6 5 | 6 5 | 6 6 | 6 6 | 6 6 | 6 6 | 6 6 | 6 7 | 6 7 | 6 7 | 27 |
| 6 | 6 10 | 6 10 | 6 11 | 6 11 | 6 11 | 6 12 | 6 12 | 6 13 | 6 13 | 6 14 | 6 14 | 24 |
| 9 | 6 15 | 6 15 | 6 16 | 6 16 | 6 17 | 6 18 | 6 18 | 6 19 | 6 20 | 6 20 | 6 20 | 21 |
| 12 | 6 20 | 6 20 | 6 21 | 6 22 | 6 23 | 6 24 | 6 24 | 6 25 | 6 26 | 6 27 | 6 27 | 18 |
| 15 | 6 25 | 6 26 | 6 26 | 6 27 | 6 28 | 6 29 | 6 31 | 6 32 | 6 33 | 6 34 | 6 34 | 15 |
| 18 | 6 30 | 6 31 | 6 32 | 6 33 | 6 34 | 6 35 | 6 37 | 6 38 | 6 39 | 6 41 | 6 41 | 12 |
| 21 | 6 34 | 6 36 | 6 37 | 6 38 | 6 40 | 6 41 | 6 43 | 6 44 | 6 46 | 6 48 | 6 48 | 9 |
| 24 | 6 39 | 6 41 | 6 42 | 6 44 | 6 45 | 6 47 | 6 49 | 6 50 | 6 52 | 6 54 | 6 54 | 6 |
| 27 | 6 44 | 6 46 | 6 47 | 6 49 | 6 51 | 6 53 | 6 55 | 6 57 | 6 5 | 7 1 | 7 1 | 3 |
| ♁ | 6 49 | 6 50 | 6 52 | 6 54 | 6 56 | 6 58 | 7 0 | 7 3 | 7 50 | 7 8 | 7 8 | 0 |
| 3 | 6 53 | 6 55 | 6 57 | 6 59 | 7 1 | 7 4 | 7 6 | 7 9 | 7 11 | 7 14 | 7 14 | 27 |
| 6 | 6 57 | 7 0 | 7 2 | 7 4 | 7 7 | 7 9 | 7 12 | 7 15 | 7 17 | 7 21 | 7 21 | 24 |
| 9 | 7 2 | 7 5 | 7 7 | 7 9 | 7 12 | 7 15 | 7 17 | 7 20 | 7 24 | 7 27 | 7 27 | 21 |
| 13 | 7 7 | 7 9 | 7 12 | 7 15 | 7 17 | 7 20 | 7 23 | 7 26 | 7 30 | 7 33 | 7 33 | 18 |
| 15 | 7 11 | 7 13 | 7 17 | 7 19 | 7 22 | 7 25 | 7 28 | 7 32 | 7 35 | 7 39 | 7 39 | 15 |
| 18 | 7 15 | 7 18 | 7 21 | 7 24 | 7 27 | 7 30 | 7 34 | 7 37 | 7 41 | 7 45 | 7 45 | 12 |
| 21 | 7 19 | 7 22 | 7 25 | 7 28 | 7 31 | 7 35 | 7 39 | 7 42 | 7 47 | 7 51 | 7 51 | 9 |
| 24 | 7 23 | 7 26 | 7 29 | 7 32 | 7 36 | 7 39 | 7 43 | 7 48 | 7 52 | 7 56 | 7 56 | 6 |
| 27 | 7 26 | 7 29 | 7 33 | 7 36 | 7 40 | 7 44 | 7 48 | 7 52 | 7 57 | 8 2 | 8 2 | 3 |
| ♁ | 7 30 | 7 33 | 7 36 | 7 40 | 7 44 | 7 48 | 7 52 | 7 57 | 7 2 | 8 7 | 8 7 | 0 |
| 3 | 7 33 | 7 36 | 7 40 | 7 44 | 7 48 | 7 52 | 7 56 | 8 1 | 8 6 | 8 12 | 8 12 | 27 |
| 6 | 7 36 | 7 39 | 7 43 | 7 47 | 7 51 | 7 56 | 8 0 | 8 5 | 8 10 | 8 16 | 8 16 | 24 |
| 9 | 7 38 | 7 42 | 7 46 | 7 50 | 7 54 | 7 59 | 8 4 | 8 9 | 8 14 | 8 20 | 8 20 | 21 |
| 12 | 7 40 | 7 44 | 7 48 | 7 53 | 7 57 | 8 2 | 8 7 | 8 12 | 8 17 | 8 23 | 8 23 | 18 |
| 15 | 7 42 | 7 46 | 7 50 | 7 55 | 7 59 | 8 4 | 8 9 | 8 15 | 8 20 | 8 26 | 8 26 | 15 |
| 18 | 7 44 | 7 48 | 7 52 | 7 57 | 8 1 | 8 6 | 8 11 | 8 17 | 8 23 | 8 29 | 8 29 | 12 |
| 21 | 7 45 | 7 49 | 7 54 | 7 58 | 8 3 | 8 8 | 8 13 | 8 19 | 8 25 | 8 31 | 8 31 | 9 |
| 24 | 7 46 | 7 50 | 7 55 | 7 59 | 8 4 | 8 9 | 8 14 | 8 20 | 8 26 | 8 32 | 8 32 | 6 |
| 27 | 7 47 | 7 51 | 7 56 | 8 0 | 8 4 | 8 10 | 8 15 | 8 21 | 8 27 | 8 33 | 8 33 | 3 |
| 30 | 7 47 | 7 51 | 7 56 | 8 0 | 8 5 | 8 10 | 8 15 | 8 22 | 8 27 | 8 34 | 8 34 | 0 |

De horologio horiçontali.



Horologiū horiçõtale i
 quauis habitatiõe hoc
 modo conficiet. Disten
 sis pedib⁹ circini ad la
 tus quadrantis horolo
 gij horiçontalis in pla
 nitie quada circulū describe: cui⁹ dia
 metro designata alterū semicirculozū
 spacijs horarijs designandis accõmo
 da. Eius itaq; semicirculi arcū diuide
 p̄ medius, ⁊ a puncto medie incisionis
 ad centrū circuli duc lineaz rectā: que
 erit hore duodecime: diameter autem
 circuli dudum lineata duplici hore se
 xte videlicet antemeridiane ⁊ postme
 ridiane inseruiet. Que res ut de initi⁹
 exponi possit: arcum semicirculi oppo
 ne pectori tuo ita ut linea hore duode
 cime aduersus te porrigatur. Sic ergo
 diametro circuli in duas semidiamē
 tros resoluta: dextra quidem semidia
 meter horā sextā ante meridianā rep̄
 sentabit. sinistra autē sextā p⁹ meridia
 nam. Reliquas autē horaz lineas hoc
 pacto inscribes. Pone filū quadrātis
 ad scalam latitudinū ⁊ moue indicem
 id est nodulum filo adherentē ad ele
 uationē poli in scala signatā. Deinde
 translato indice ad lineaz hore prime
 habebis in arcu quadrantis extremo
 inter filuz extensū ⁊ latus sinistrū qua
 drantis distantiam vnius hore a meri
 die: quam distantia circino acceptam
 traduc ad semicirculū horologij futu
 ri figendo scilicet alterū pedem circini
 in extremo puncto linee hore duode
 cime. alterius autē circumducti vtrinq;

vestigium nota in arcu semicirculi.
 duoz; puncta sic facta cum centro ho
 rologij continua p̄ duas rectas: quaz
 dextra quidē vndecimā horam signifi
 cabit: sinistra autē primam post meri
 diem. Rursus pone indicem ad lineaz
 hore secunde: ⁊ habebis distantia dua
 rum horarū a meridie inter filū exten
 sum latusq; quadrantis. Hanc distan
 tiam transfer sicut antea ad circūferen
 tiam horologij. factisq; duobus pun
 ctis. ac ipsis cum centro horologij co
 pulatis: dextra quidem linea erit hore
 decime: sinistra autem hore secunde.
 Non aliter efficies reliqs horologij li
 neas posito indice sup̄ ceteras horarū
 lineas in quadrante. Ad hunc modum
 semicirculus horologij duodecim ho
 rarum spacijs distinguit. Quum autē
 dies estini pluribus q̄ duodenis con
 stent horis: reliquas horarū distācias
 hac via deprehēdes. Quanta est inter
 capedo quinte ⁊ sexte horarū in circū
 ferentia horologij: tantū officio circi
 ni adiuuge vtriq; hore sexte: factisq; p̄
 pedem circini vaguz duobus punctis:
 ac eis cum centro per lineas rectas co
 pulatis: dextra quidem horam quintā
 antemeridianam: sinistra vō septimā
 postmeridianā representabit. Itē sum
 pta similiter intercapedine duarū ho
 rarum quarte sexteq; ac ea vtrinq; ad
 horam sextā adiūcta: si ut prius duas
 rectas duxeris: dextra quidem horam
 quartam antemeridianā: sinistra octa
 uam postmeridianam commonstra
 bit. Ceterum descriptis iam lineis ho
 rarijs pone filum quadrantis ad nu
 merum eleuationis poli i habitatiõe

tua: qui p tabulā regionuz deprehēdit
 mor enī apparebit angul^o quidaz filo
 ipso ⁊ latere quadrantis graduato cō-
 tent^o: cui equalez fac ex tabula lignea:
 aut ex lamina ferrea: eūq; anguluz ad
 lineam hore duodecime sic applica ut
 cuspi eius cū centro horalogij cōue-
 niat. superficies autē anguli rectissime i-
 nitat planitie horalogij neutrosū vi-
 delicet declinās. Poteris etiā si libeat
 ex centro horalogij educere filum fer-
 reum. fm quātitatē anguli memorati
 eritq; vsus ei^o idem cū vsu anguli: vtri-
 usq; vmbra horas indicante. Dacten^o
 de fabrica. nūc de positione horalogij
 tractandum que haud cōmode sine li-
 nea meridiana comparat. Est autem
 vulgaris linee meridiane inuentio ad
 hunc fere modū. In plano ad equidi-
 stantiā horizontis posito describe cir-
 culū quārūlibet. in cui^o centro fige sti-
 lū teretē sicut cacumen eius quaquer-
 sū equaliter distet a circumferētia cir-
 culi. Ea autez longitudine sit stilus ut
 vmbra eius breuissima que fit i meri-
 die intra circulum terminet. Obserua
 itaq; duas stili vmbraas equales ante
 meridianā ⁊ post meridianā: quarum
 videlicet vtraq; ad circūferentiā circuli
 desinat: factisq; duobus punctis ad ter-
 minos vmbraarū arcus interceptus p
 equa diuidat: punctasq; medie inciso-
 nis cum centro circuli copulet: q̄ quan-
 tūcunq; etiā vtrinq; extensa erit linea
 meridiana quam querebas. Cui iam
 supimponē lineā hore duodecime ho-
 rologij: ita ut semicirculus horari^o ad
 septētriones spectet. Sole itaq; radian-
 te vmbra anguli supza memorati aut
 fili ferrei horas indicabit. Poterit autē

ex vna linea meridiana q̄ facillime i-
 numeras alias elicere. Nā in ipso pun-
 cto hore duodecime vbicunq; ppendi-
 culum ex manu demiseris: si in vmbra
 fili duo pūcta vbilibet sumpta p rectā
 copulaueris: ea noua erit linea meri-
 diana. Punctū autē hore duodecime
 minister tuus ad horologijz adstans
 tibi q̄uis absenti pronunciabit.

De noricia horarū equinoctialiū.



Er quadratū horarium
 buic libello insertū ho-
 ras dierū in quauis ha-
 bitatione facile discer-
 nes si prius officia par-
 tiū instrumēti pspexerit.

Est itaq; scala latitudinuz cancellatis
 strata lineis quarū que inuicē equidi-
 stant elevationes poli definiūt: nume-
 ris suis ad dextram adnotatis: que vō
 ad angustiam descendūt quasi cōcur-
 sum petētes signa cōdiaci denosq; eo-
 rum gradus distinguunt: litteris signo-
 rum initialibus opportune subnota-
 tis. Discretiōis autem gratia quelibet
 equidistantiū vocet cōdiacus habita-
 tionis: quoniā vnaqueq; earum in si-
 gna gradusq; secta est per lineas incli-
 natas deorsū venientes. Sub hac sca-
 la est numerus horarum duplex: ante
 meridianus quidem superior: postme-
 ridianus autem inferior: iuxta suam
 quisq; horariam lineā. Extreme autē
 linee videlicet hore duodecime adiacet
 scala breuib^o quibusdam distincta
 spaciolis: quorū singula denos grad^o
 representāt. Gradus inquam signorū
 que iuxta etiaz litteris suis primarijs
 adscribuntur. Talem autem signorūz

graduūq; contextū baud iniuria cōdi-
 acum meridiēi quīspīā appellauerit.
 Predictis lineis supincūbit brachio-
 lum quoddā mobile. ex cuius fine que
 vocet manus demissū est perpendicu-
 lū: cui⁹ filo adheret nodulus quidam
 hozarū index. Porro ī suprema linea
 instrumenti aut e directo eius ad fini-
 stram figendus est aliqd qđ vmbzā ia-
 ciat soli oppositū: quale poterit eē gra-
 nū cereū uel nodulus aut aliqd huius-
 cemodi. In quacūq; igit habitatione
 fueris diligent animaduerte cōdiacu-
 tuū. nā in eo semp man⁹ predicta vltro
 citroq; decurret. Eā ergo manus pone
 ad gradū solis in cōdiaco habitatiōis
 tue. filioq; ppendiculi libere demissi ad
 graduz solis in cōdiaco meridiēi apta-
 to transfer noduluz filo adherentē ad
 eundē solis gradū. Quibus sic disposi-
 tis sinistrū instrumenti lat⁹ oppone so-
 li radianti ita ut vmbza cerei grani ad
 supremā instrumenti lineā porrigatur
 Nox enim situs noduli inter lineas
 hozarias questā indicabit hozam.

De hozis temporalibus.

RActenus omnē hozarū
 cōputū retulim⁹ ad me-
 ridianum: hoc est: uel a
 meridiē uel a media no-
 cte inītiuz supputatiōis
 fecim⁹. Jam si libet ad
 hozicōntē referre (qm̄ plerisq; mos est
 ab occasu solis hozas cōputare: non-
 nulli etiam ab oriente sole hozis diur-
 nis inītiū facere cōsueuerūt) ad occa-
 sum hoc modo reduces hozas a meri-
 die ceptas. Subtrabe temp⁹ semidiur-
 nū ex numero hozaruz a meridiē inci-
 pientiu supadditis viginq;tuoz hozis
 si alias subtractio fieri nequeat. Si vō

a media nocte fuerint cōputate: deme-
 semidiurnū duodecim hozis supaddi-
 tis. Sic enī relinquet numerus hozarū
 a principio noctis computandarum.
 Ad ortuz autē rediges hozas a medio
 noctis exorsas si ex eis tēpus semino-
 cturnū detraxeris cū suplemēto etiaz
 viginq;tuoz hozarū si aliogn detra-
 ctio fieri nō possit. A meridiē vō inci-
 pientiu subtrabe seminocturnū duode-
 cim supadditis hozis. Et hacten⁹ qđez
 oia de hozis equinoctialib⁹ quas vul-
 go equales vocāt: accipienda sūt. Has
 aut facile cōuertes in hozas tempales
 quez ineqales hodie nuncupantur si
 vsū instrumenti ad hanc rem expositi
 addiscas. Pone igit filuz instrumenti
 sup numerū tēporis semidiurni ī lim-
 bo deprehensū: et moue nodulum ad
 arcū hozē duodecime. Deinde transfer
 filū in eodem limbo ad hozas equino-
 ctiales ppositas: sed a meridiāno hac
 uel illac: id est: ad orientem versus uel
 occidentē pur res admonet computa-
 tas. Nox enim inter arcus hozarios
 hozam temporalē nodulus indicabit
 Verū cū duplex illic numerorū series
 appareat: superior quidez ab. 1. ad. 6.
 antemeridianis hozis debet: inferior
 aut a. 7. ad. 12. postmeridianis. Erant
 autē hozē temporales antemeridiane
 si equinoctiales antemeridiane fuerit
 et si has postmeridianas supposueris:
 ille quoq; postmeridiane erunt. Non
 aliter de hozis nocturnis te expedies
 si filo ad temp⁹ seminocturnum posito
 nodulū ut antea ad arcū hozē duode-
 cime pduxeris: hozasq; eqnoctiales p-
 positas a medio noctis hac ul' illac cō-
 putaueris. De sūt hozē qb⁹ p̄isci vte
 ban⁹ q dies quoscūq; ac etiam noctes

duodenis horis cōstituebāt. Sz ꝛ eas horas gubernamento luminariuz ac planetarū distribuebāt incipientes a prima hora diei saturni: quā saturno ipsi supremā obtinenti sedez dicauere secundā ioui. tertiam marti: ꝛ sic deinceps ordine seruato tā horarū q̄z planetarū. nocturnas etiā horas diurnis subiungentes: ita ut ꝑ cursis viginti q̄tuor horis: planetisq; quotiēs oportet repetitis vigesimā magna hora: id ē prima postere diei quartū ex ordine planetā asciscat. Sic prima hora sequētis diei: id est dñice ad solē attinet. ꝛ que deinde succedūt ut prius planetis suis accōmodant. ¶ Sz ne in re pualgata diē teramus: si libet scire cui planete debeat hora quelibet ꝑposita: scias in primis cuius planete sit dies ꝑsens. Talē autē planete habēt successionem ꝑ dies septenos: Saturn⁹ Sol Luna Mars Mercurius Iuppiter Venus. diem sabbati saturno assumente: ceterisq; dieb⁹ ad ceteros planetas ex ordine relatis. Quo cognito statue primā horā diei in nota interiori primi articuli indicis: secundā in nota secūdi articuli: tertiam in nota tertij: quartā in cacumine indicis: quintā in nota exteriori tertij articuli: sextam in secundo septimā in primo articulo extrinsecus reliquas autē horas si que sint: similiter ad articulos sequētiū digitorū adapta digitūq; qui horā ꝑpositā suscipit animaduerte. Nā si in primo articulo talis digiti intrinsec⁹ planetā diei sistes ꝛ sequentib⁹ articulis sequētes planetas addicabis donec ad sedē hore ꝑposite venies: illic planetaz hore dñim deprehendes. Nec quāticūq; sint in momento adnotasse nō fuerit alienuz qñ quidē horarū tractatu ad hāc fere scri

ptionē adducti sum⁹ q̄uis hoc quoq; simul innotescat cur septenis diebus a septenario planetarū numero appellationē mutuantibus nō seruet planetarum ordo qualis in celo est: sz a saturno verbi gratia ad solem a quo ad lunā: ꝛ ita deinceps binaria semp intercalatione saltus fiat. Id enim vigene quaterne hore quibus singuli dies noctesq; constant facta ꝑ eas planetarū distributione erigūt. Quippe hoc successu vigesimequinte hore: id est exordio postere diei quart⁹ a priori planeta duobus iam ꝑteritis allegat.

De ascendente.



St colūnula i extremo faciei dextre calendarij nup addita cui⁹ ē ascendēs inscriptio: trinis distincta numeris: habentibus. D. g. m. in fronte

In qua vltimo numerorum in ordine oriens siue ascendens signū suusq; gradus sup horizonta quibuscūq; diebus mensuz in meridie deprehenditur. ex aduerso in celo occidens: Gradus e directo in solis colūnula medium celi: i eius aduersa parte angul⁹ terre: si recte aduuerteris in celi circulo euidenter inueniunt. Quot autē horas uel post uel añ meridiē idē cupis scire: horas post meridianas ꝑteritas addere antemeridianas futuras demere oportebit ex horis ꝛ minutis in suo ordine ad diez ꝑpositū ꝑpositis. Si autē ex additiōe h⁹ cemodi hore. 24. supercrescerent. illas abisce. Uel si subtrahi negret horꝝ sup additꝝ. 24. Numer⁹ ex alterutro restās horarū: ei i serie horarū ꝛ minutoꝝ est querend⁹ dñis: at vqi ille inuentus fuerit iuxta a dextris gradus ad horā ꝑpositā ostendit gradus signi orientis.

Hic calendarij nri clauderemus vsuz nisi quorundam de celebritate paschali dubitatio succurreret: qua de re non nihil ex presenti opusculo colligi potest. Nam quum diuino precepto iustum sit pascha celebrari quartadecima die mensis primi. Primum autem mensis dicitur cuius initium aut mediuz in ipso egnocitio verno est: uel initium vicinius eidem equinoctio: conspicuum est huius rei obseruatione e duobus pendere principijs. egnocitio videlicet verno et nouilunio primo: quorum neutri stabilitis perpetuo sedes concessa est in calendario romanensi quo ecclesia etiam christiana vtitur. Quippe ratio supplementi bissextilis non recte quadrat quin: quattuor anni ecclesie paucillo quodam superent quattuor annos solares. Quo fieri oportet ut si hoc anno verbi gratia equinoctium vernum fuerit ad vnguem in meridie vndecime diei Martij quattuor annis vsualibus exactis egnocitium sile iam non erit in meridie vndecime diei sed tanto prius quantus est excessus quattuor annorum vsualium super quattuor annos solares. Verum huiusmodi anticipatio paucis quidem annis admodum parua existens multorum successu annorum paulatim sensibilis redditur adeo ut a tempore Dionysij abbatis cuius paschali computo adhuc vtimur: ad nostram vsque etatem memorata equinoctij verni anticipatio dies ferme decem complexa sit. Pari ratione nouilunia quoque firmos in calendario locos habere nequeunt: quum septuagenis vsualibus annis lunationes singule ad senas prope horas anticipant. Quas ob res ut quibus breuissime

dicas: quum his annis equinoctium vernum fiat vndecima Martij quod tempore Dionysij fiebat vigesimaseptima eiusdem: si quod plenilunium in hoc decem dierum intervallo euenerit: id pro ecto pascale erit secundum institutionem primariam quibus computo Dionysij discrepante. Qui ergo sciunt egnocitium vernum hoc nostro tempore ad vndecimam Martij fieri. sed nemo fere ignorat quum iam pridem diuini Gregorij dies videlicet duodecima Martij eidem concessa sit egnocitio: qui denique in celo aut alias plenilunium agnoscunt: quod iam puulgatum est: quod rursus diuini tenore precepti de celebritate paschali didicerunt: quod penne in proptulato est popularibus: iam dudum lingua vernacula litteras legentibus sacrasque certe omnes mirari possunt cur indicium intervallicum decem dierum plenilunio incidente non eo ipso aut saltem prima diuina sequenti pascale fiat sacrumque pro mensem totumque eo quicquid amplius ecclesia iubente differat. Hinc quodam oziri solent quatuordecim de luna paschali quibus mota fuit Bessarioni cardinali dum legatum in Venetiam ageret. Quales etiam mihi a multis et quibusdam hebreis sepe numero obiectate sunt. Talis denique ambiguitas videtur quodam sacerdote verasse premisses ut paschalem diem agerent mense fere toto priusquam ecclesia vltis celebraret: durate idcirco in hodiernum vsque diem verbo in eos ludifico. Martima autem ac nimis pudenda est contumelia quam nobis hebraica durities: suum istud peccatum inferre non erubescit: nunquam in nos cauillandi finem faciens: ut quod a se non minus sacre litterature pretermutati sumus ne prima quidem diuine legum monimentum suare studeamus. sed uel ignorancia nobis uel incoscantia impingens. Quam obrem ope precium est quodam futuros proferre annos quibus vera paschalis

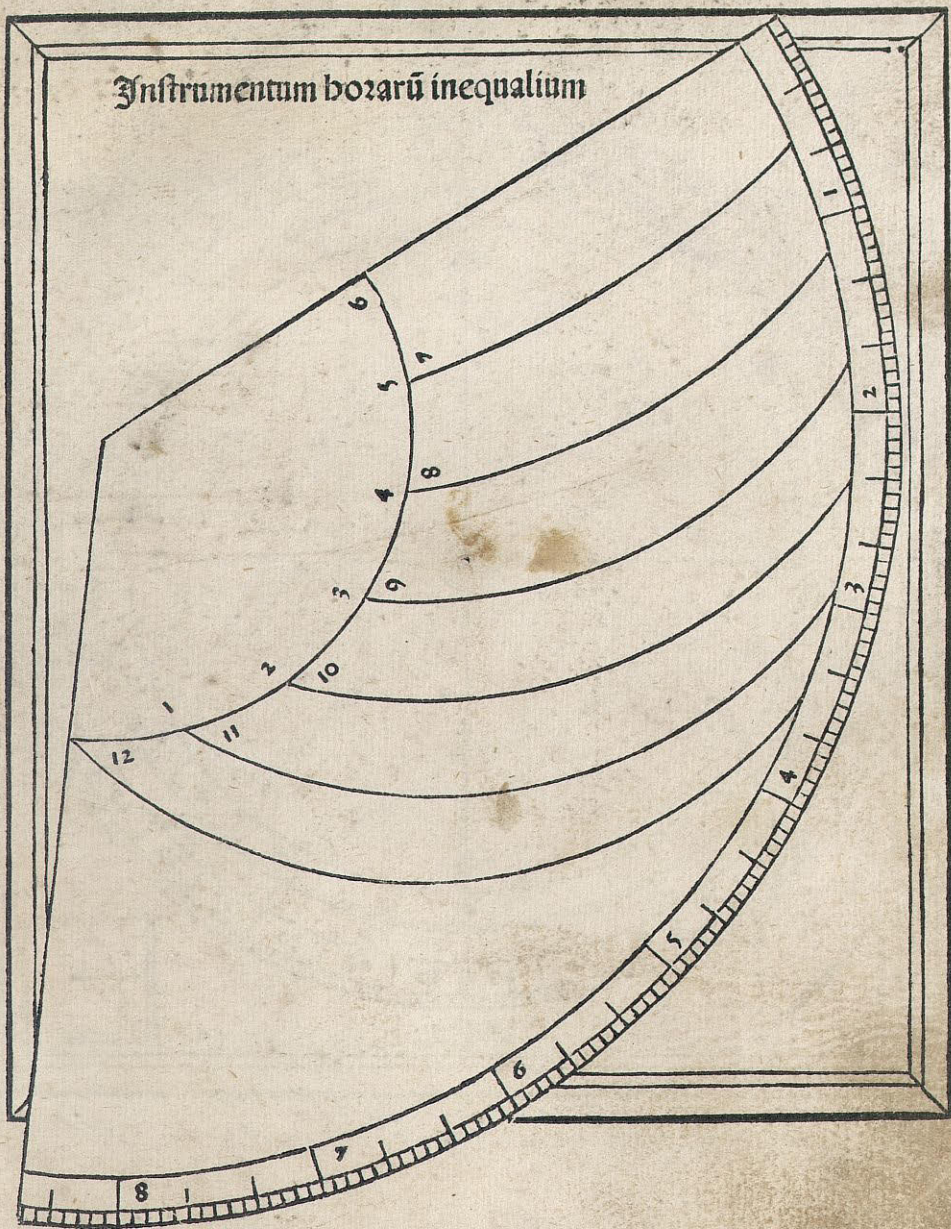
ratio discrepat a prisca illa supputa-
 tione Dionysiana quā ad huc ecclesia
 vniuersalis p̄ auctoritate sua tolerat.
 Hoc aut̄ prefator nō animo reprehē-
 dendi me id facturū: qm̄ nō penes ar-
 bitriū meū sita est huiuscemodi nego-

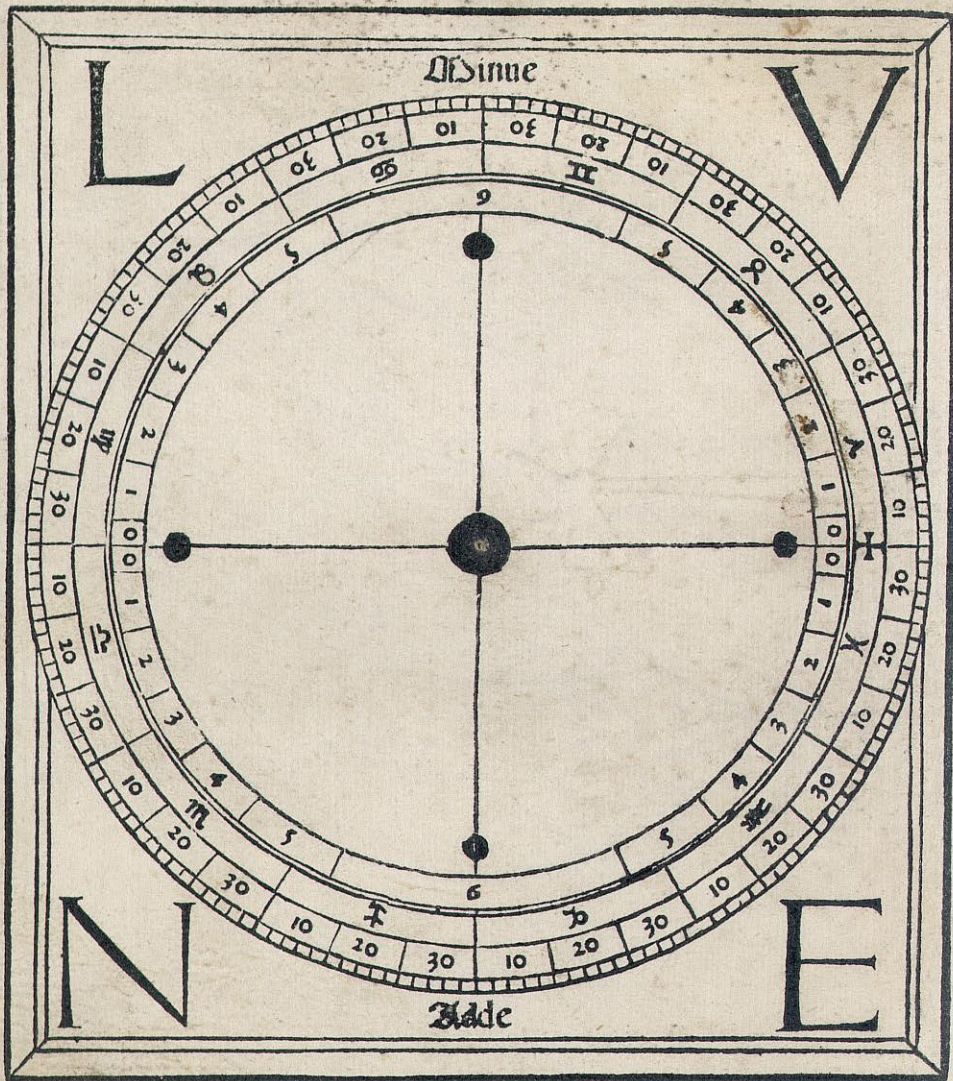
cij precipua tractatio: sed quo cautio-
 res fiant nostri hoies siquādo impia
 quouis obiectione vexentur. Daud
 eni facile ē tela reputere improuisa.
 Jam vō fas sit huiuscemodi discre-
 pantia tabulari numero demonstrare.

¶ Dies pascales.

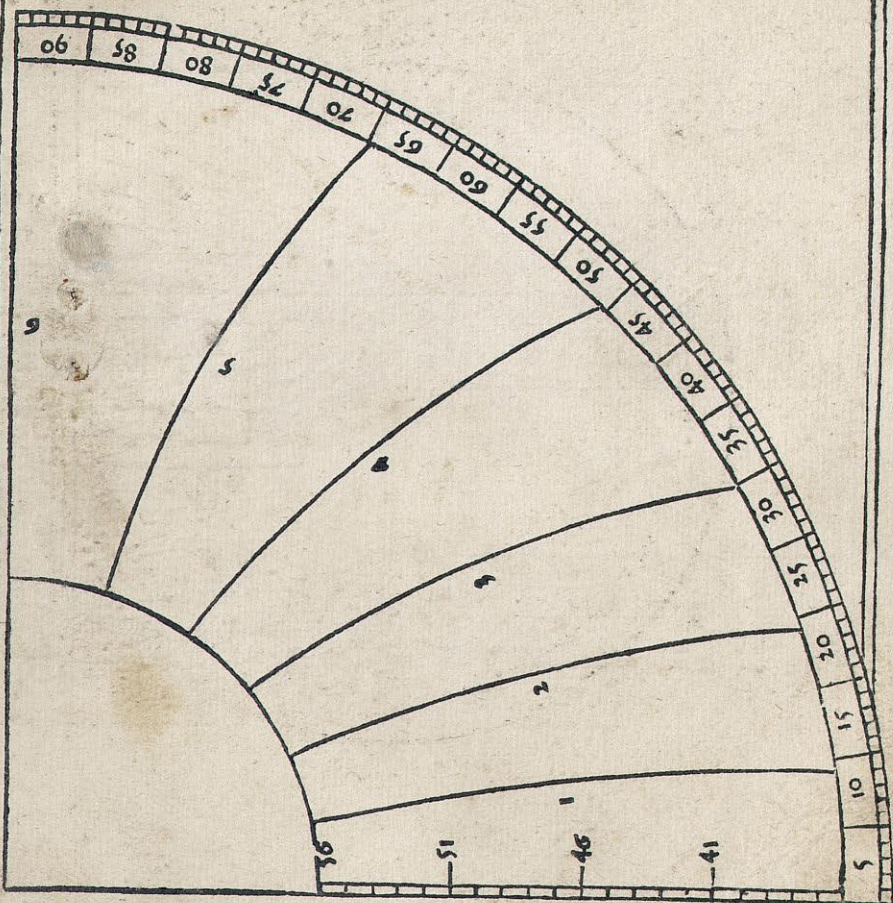
| Anni
Christi | Juxta vsum
ecclesie | Juxta decre-
ta patrum | Dia |
|-----------------|------------------------|---------------------------|-----|
| 1477 | 6 Aprilis | 30 Martij | 7 |
| 1481 | 22 Aprilis | 18 Martij | 35 |
| 1484 | 18 Aprilis | 14 Martij | 35 |
| 1488 | 6 Aprilis | 30 Martij | 7 |
| 1489 | 19 Aprilis | 22 Martij | 28 |
| 1491 | 3 Aprilis | 27 Martij | 7 |
| 1492 | 22 Aprilis | 18 Martij | 35 |
| 1494 | 30 Martij | 23 Martij | 7 |
| 1495 | 19 Aprilis | 12 Aprilis | 7 |
| 1497 | 26 Martij | 19 Martij | 7 |
| 1498 | 15 Aprilis | 8 Aprilis | 7 |
| 1500 | 19 Aprilis | 22 Martij | 28 |
| 1501 | 11 Aprilis | 4 Aprilis | 7 |
| 1503 | 16 Aprilis | 19 Martij | 28 |
| 1504 | 7 Aprilis | 31 Martij | 7 |
| 1508 | 23 Aprilis | 19 Martij | 35 |
| 1511 | 20 Aprilis | 16 Martij | 35 |
| 1512 | 11 Aprilis | 4 Aprilis | 7 |
| 1514 | 16 Aprilis | 9 Aprilis | 7 |
| 1515 | 8 Aprilis | 1 Aprilis | 7 |
| 1518 | 4 Aprilis | 28 Martij | 7 |
| 1519 | 24 Aprilis | 20 Martij | 35 |
| 1521 | 31 Martij | 24 Martij | 7 |
| 1522 | 20 Aprilis | 16 Martij | 35 |
| 1524 | 27 Martij | 20 Martij | 7 |
| 1525 | 16 Aprilis | 9 Aprilis | 7 |
| 1527 | 21 Aprilis | 24 Martij | 28 |
| 1528 | 12 Aprilis | 5 Aprilis | 7 |
| 1530 | 17 Aprilis | 10 Martij | 28 |
| 1531 | 9 Aprilis | 2 Aprilis | 7 |

Instrumentum horarū inequalium



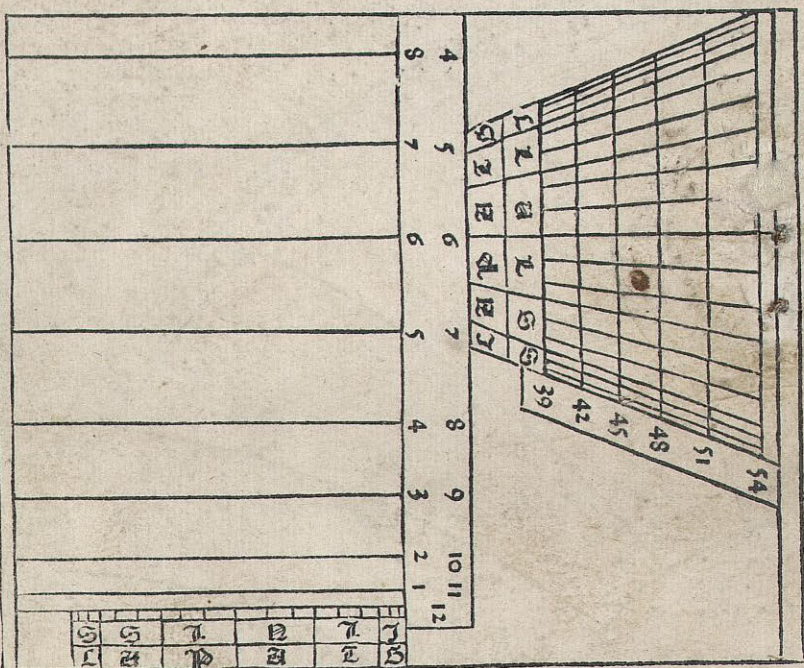


Quadrans horologii horizontis



Scala latitudinum

Quadrātū horariū generale



Scala latitudinū

Signa meridiani