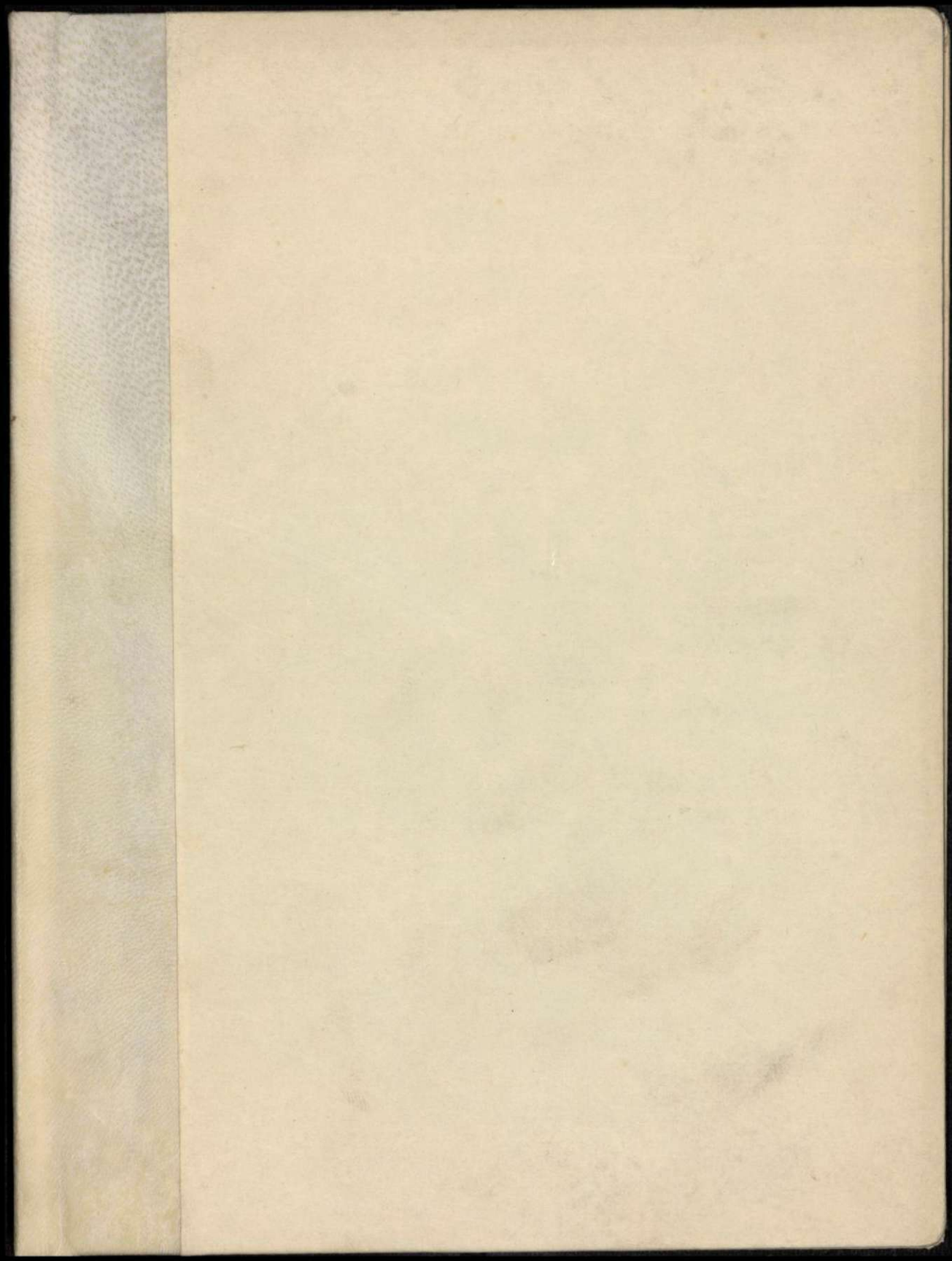


J.I. Bartolache

NETENACHTILIZTLI

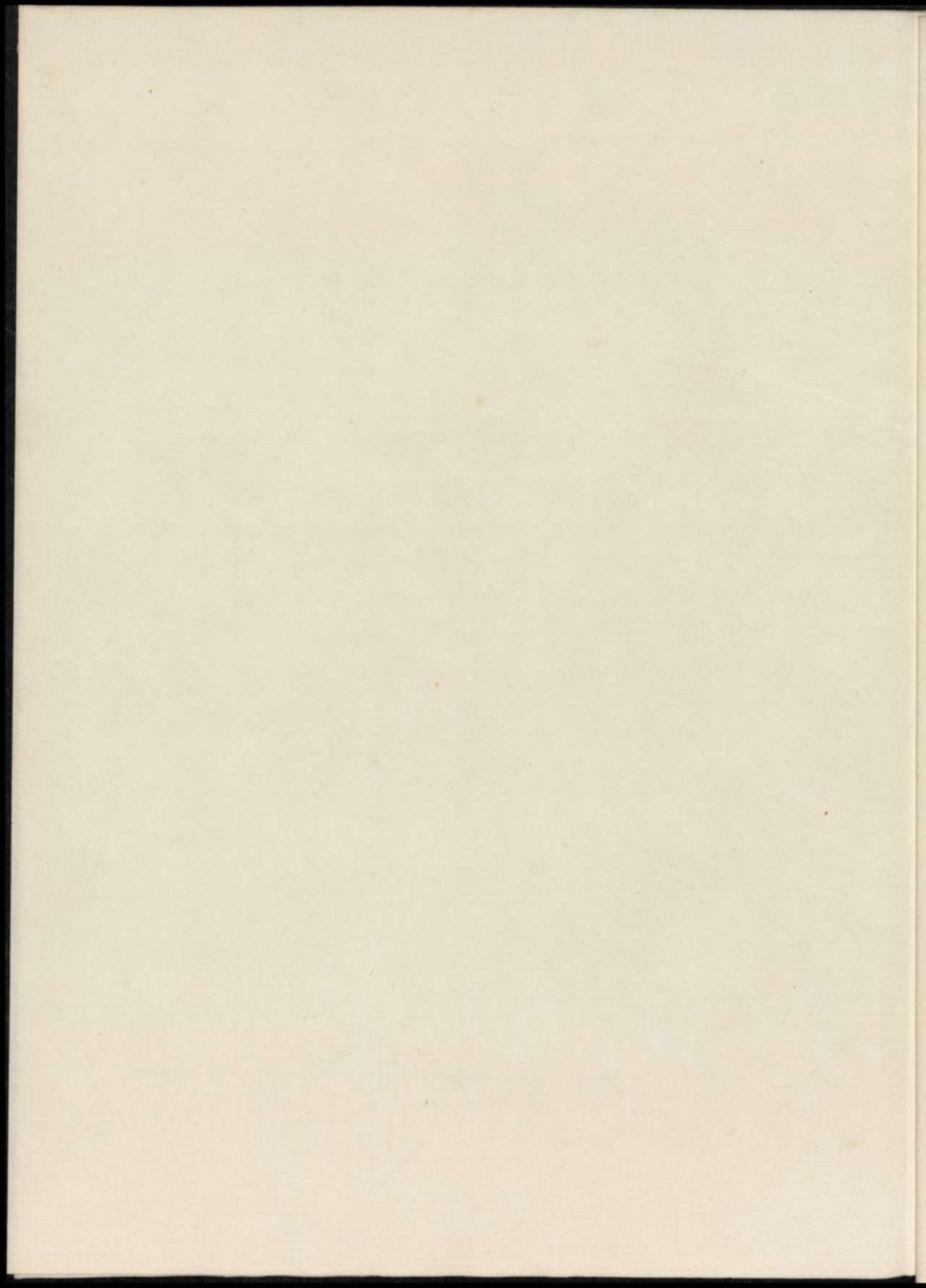
Mexico 1774

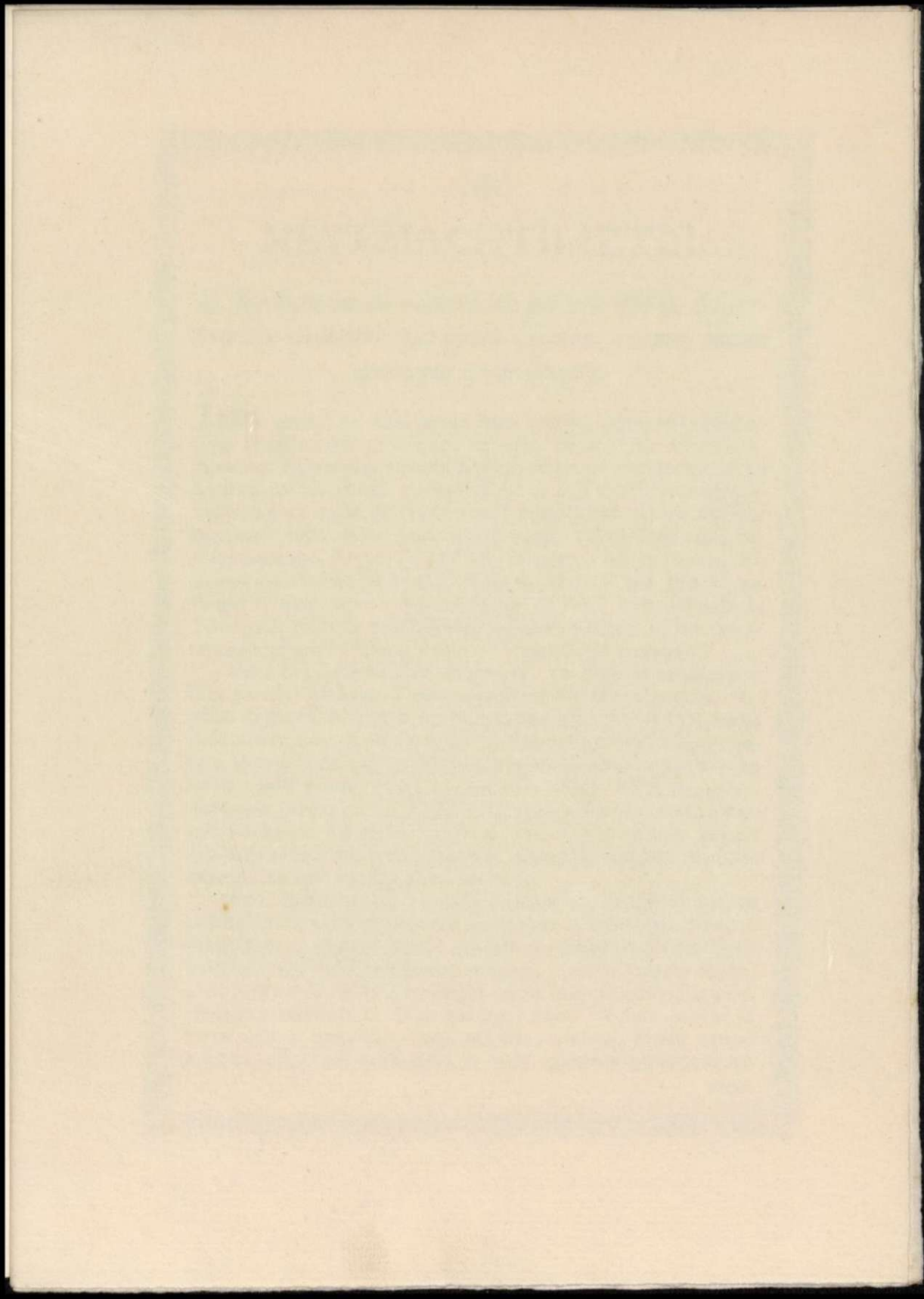


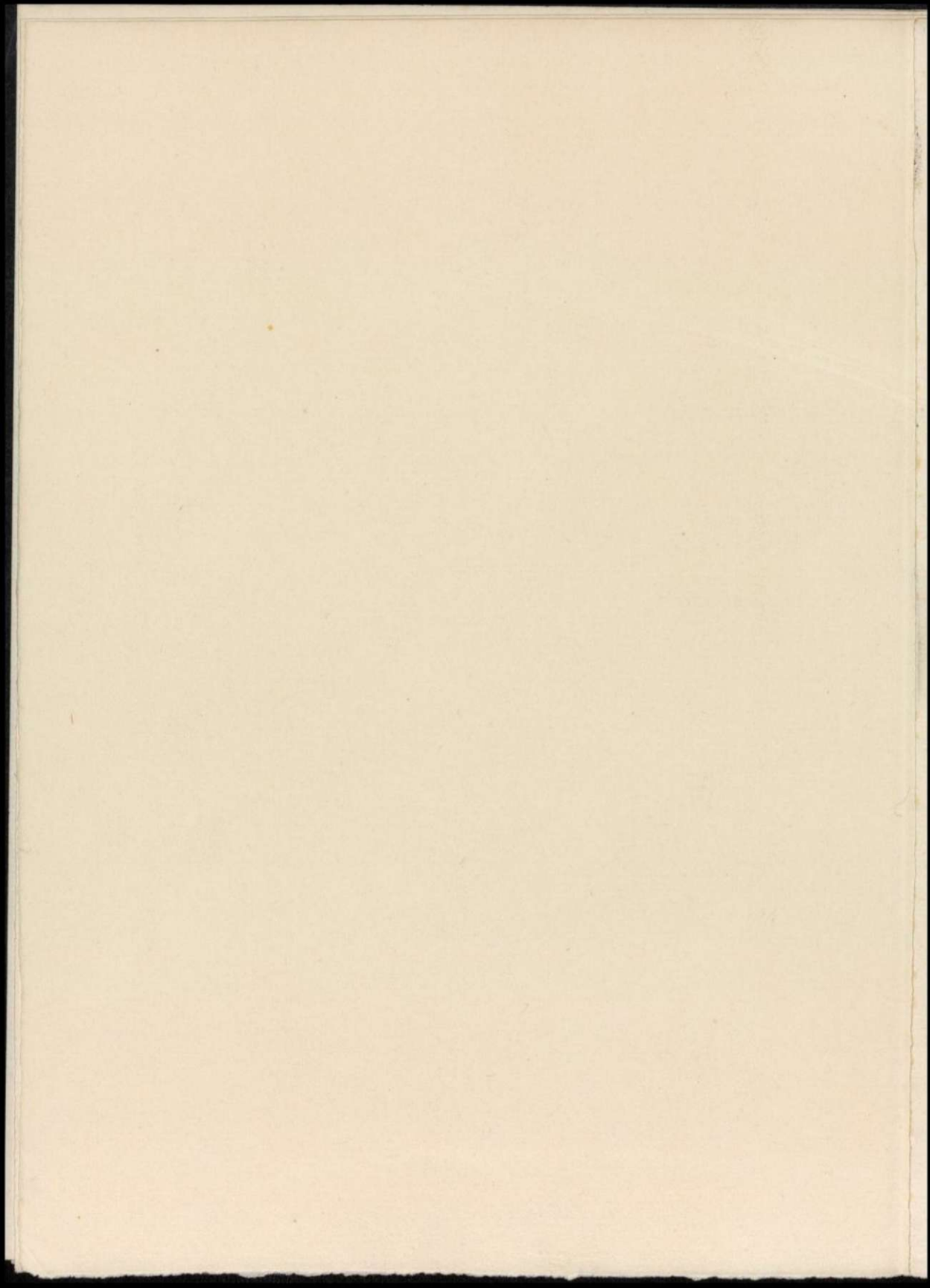
22.1

FG 3212

FG 3212









NETEMACHTILIZTLI.

In Itechpa in cè yancuican pahlti; inic in Macehualtin quimatizque iquin yeiman, quenin, ihuan quezqui quicelizque.

ININ pahlti ca huel cenca huei qualli, ipampacà yehuatica tepatilozque in ihuicpa in miec in nepapan cocoliztli. Auh inic quineltocazque in Macehualtin ca mochi inic, in ye omitto, ca melahuac, quimatizque: ca in Tepatiliztzonequillinime in nican Mexico nemi, oquittaque, ihuan oquitoque, ca qualli. Auh monamacaz ompa Tepatiliznamacoyan inicalnacazco, Botica Santa Inès, inixpan Tlatocayopancalli, campa mochihua in tomin. Auh in ipatiyò zan yez ahmo tiszotli, ipampacà in Macehualtin ca huel huei icnotlacà; Yece inic yuhqui mochihuiz; quiqualcuizque in inteopixcahuan (nozo P. Cura, nozo P. Vicario) ce amatontli.

Inic centlamantli in momatiz, ca quenin motocayoz inin pahlti? Motoca: *Tepitonyepoztlaxcalli*: castillancopa *Parillas de ferro*. In aquin mococoa, huelitiz omilhuitica, nozo yeilhuitica, quiquazome, nozo yei Tepoztlaxcaitzintli, quenamic, ihuan iquin quinequiz. Yece iquacon ahmo quiquiz in xochiqualli xococ, ahmo no quiconiz coztic octli, ahmonotlachiqui, ahmo no castillantiilli agua ardiente, nozo chinquirito, ahmo no mezcaltli: ihuan zatlatzonco ahmo quiconiz mochi in tlein tetlahuanaltia; ipampacà iniquacon ahmo tepatiz, ca zan ocachi miec tecocoz.

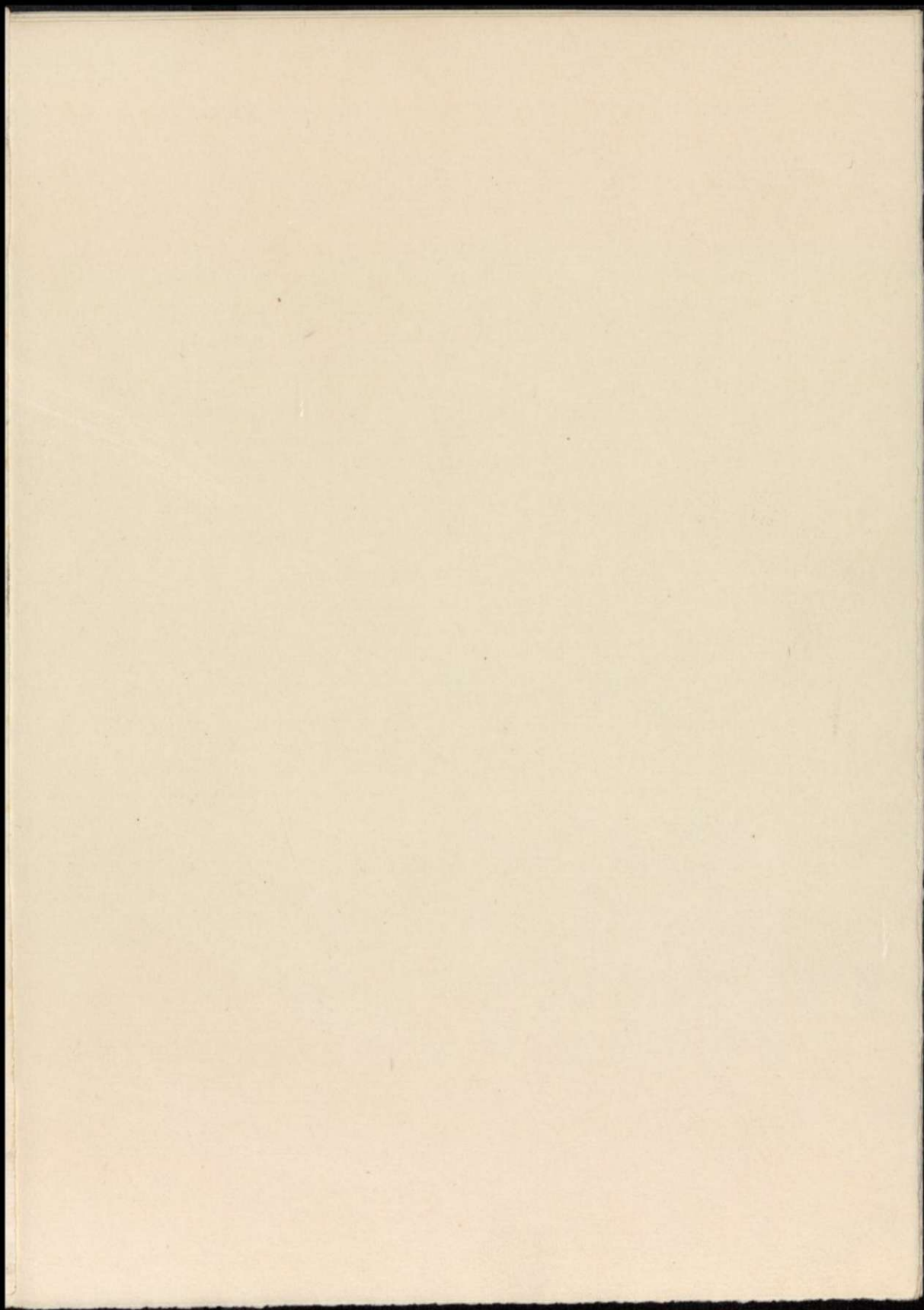
Inic ontlamantli, in quimatizque in Macehualtin, ca yehuatin: ca inin tepatiliztli qualli yez iniquac intechcocoa in yollotico, ipampa ahuel quitemohuizque in tlaqualli. = Inic quiteocihuizque iniquac mimati, ipampa ye achto huel mococotica. = Inic quimpatizque iniquac tetetzilquiza, ahnozo atonahuia. = Inic quimpatizque iniquac mochi in intlalnacayo pozahuiz, xayacoztia, amiqui, ihuan ahuel maxixa, ahuel atl quinoquia, = Inic quimpatizque iniquac quac

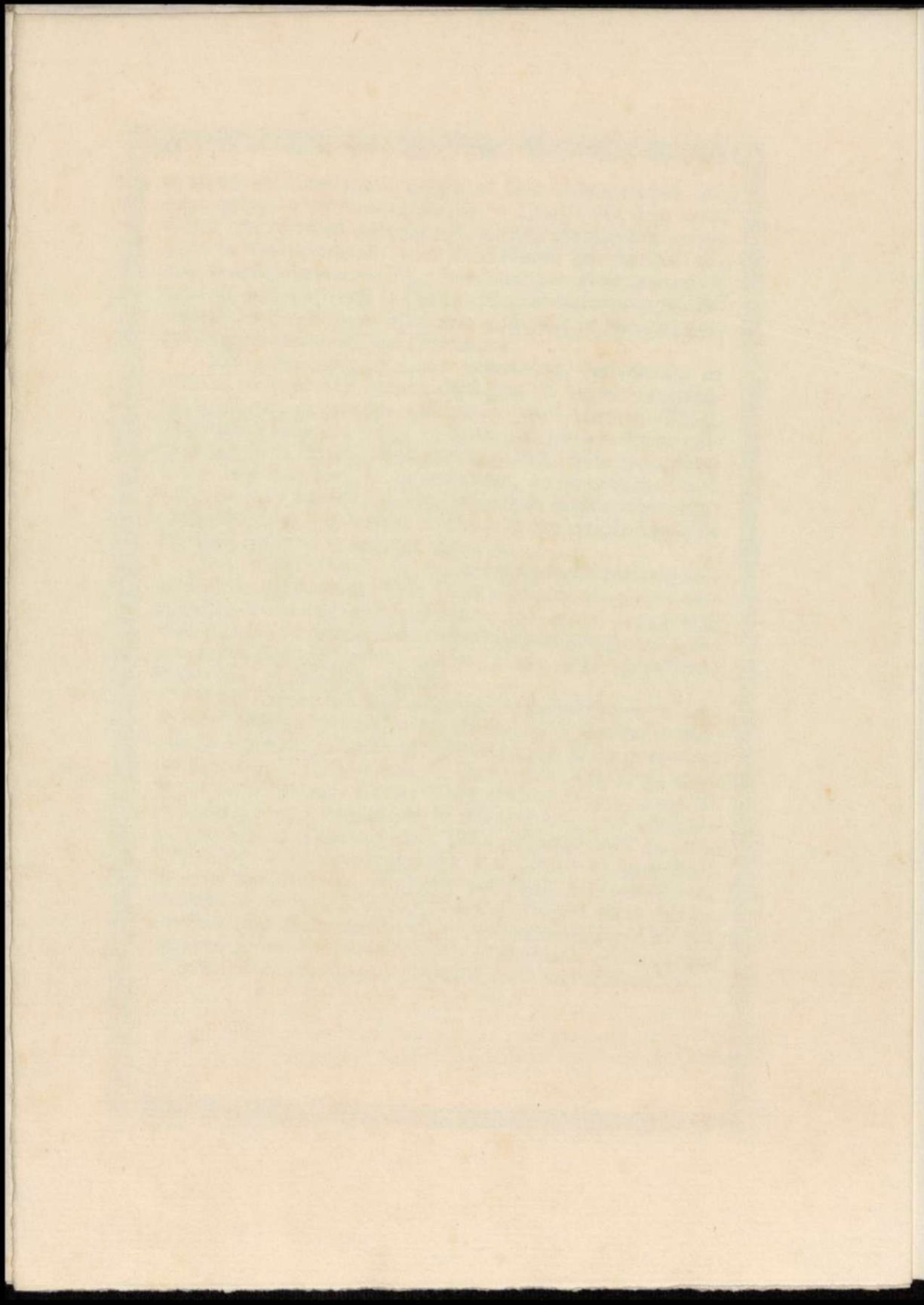
in tlaocoyallizocoliztli quipia. = Inic quimpatizque iniquac quipia in inxillanepitzaliz. = Qualli yez inin tepatiliztli inic in cihuâ quiquazque, iniquac in yolloixco quipia miéc in tetcuicaliztli; yece nimanahmo quiquazque iniquac quipia innemetzhuiliz, cihuacocolli. = Noihuan qualli yez inic quimpatizque in ihuicpa in ocmiéc in nepapanocoliztli, in nican ahmo micuiloa, ipampacâ in Macehualtin cocoxque ahmoqualli quiximatizque.

Inic etlamantli, in njcan yxonexca, yetlamatzoa ca inin: ca iniquac Aca quinequiquaz in tepuztlaxcalton-tli, qualli yez ca achtopa quittaz ce qualli tlamatini Ticitl, Tepatiani (intla âzo ompa in Ialtepeuh onca), ihuan quittatlaniz: intla hueliti, nozo ahmo, quiceliz inon tepatiloni? Yecê huel monequi in quimatizque, ca nimanahmo quiquazque intla hueleêzoticate, ihuan intla in imixtellolo huel tlatzalehuatlca, nozo huel totonia; ahnozo quipia tlepachihuiliztli, ahnozo in imelpa xocoya.

Inic nauhtlamantli in quimatizque cayehuatl: ca iniquac Aca quiquaznequi inin Tepatiliztli, ah iniquacon mozahtica, nozo âtle quipia in yolloixco, qualli yez ca achtopa quiconiz tepitzin almendraschiahuacayotl tzopelic, ahmo ixpoxcauhqui, ahmo coztic; cazan huel chipahuac; ihuan huel in ihueliliz quipiez.

Ah zatepan inic macuilamantli in quimatizque ca inin: ca macahmo quicelican in tepatiloni in, in a quique in quichicha inimezo; ahmono in cohuacihque, in immacuelos, in mixicuelos, in talpan huetzi, ihuan miéc yztlactli, miéc âpopozoquillotl quichicha. Nican ontlami in temachtiliztli in monequi, in quimatizque in Macehualtin inic quimpatizque. Ma in Totecuiyotzin Diôs quimonequilti ca inin Tepatiloni huel tlaontequixtilli yez, ihuan quimpalehuiz in icnotlacatzitzintin, quenamic quelehua in Temachtiani Bartolache, in quipia in tepatilizmachtloyan nican Mexicatlatocayon ttechpacholiztli, in ipan caxtolihuitl in Metzli Agosto, in itechpohui in xihuitl, in mopohua Nauhtzontli, ipan macuilpoalli, ipan yeipoalli, ipan matlactlionahui.





EVANSTON

